

TXNL2 antibody [N2C3]

Cat. No. GTX118339

宿主	Rabbit
克隆	Polyclonal
同种型	IgG
实验应用	WB, ICC/IF, IHC-P, IP
种属反应	Human, Mouse

引用文献 (1)

实验应用

应用说明

*最佳稀释倍数与浓度应由研究人员确认

Suggested dilution	Recommended dilution
WB	1:1000-1:10000
ICC/IF	1:100-1:1000
IHC-P	1:100-1:1000
IP	1:100-1:500

以下为常规应用缩写的中文注解

WB: 免疫印迹

ICC/IF: 细胞染色

IHC-P: 石蜡切片

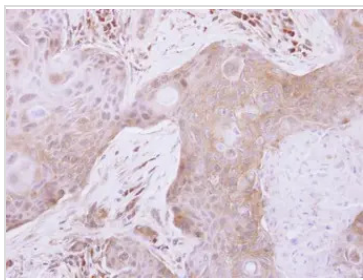
IHC-Fr: 冰冻切片

属性

形式	Liquid
存储溶液	0.1M Tris, 0.1M Glycine, 20% Glycerol
保存剂	0.01% Thimerosal
存放说明	Store as concentrated solution. Centrifuge briefly prior to opening vial. For short-term storage (1-2 weeks), store at 4°C. For long-term storage, aliquot and store at -20°C or below. Avoid multiple freeze-thaw cycles.
浓度	0.61 mg/ml (Please refer to the vial label for the specific concentration.)
偶联	Unconjugated
RRID	AB_10617991
注意事项	仅供实验室使用。不适用于人类或动物的任何临床、治疗或诊断用途。不适合动物或人类食用。

For full product information, images and publications, please visit our [website](#).

產品圖片



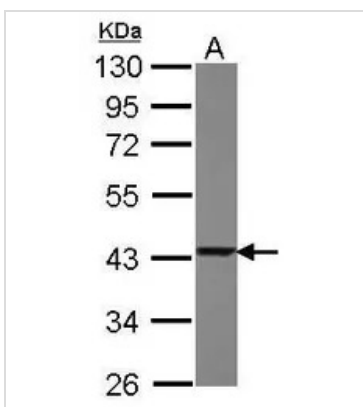
GTX118339 IHC-P Image

TXNL2 antibody [N2C3] detects TXNL2 protein at cytosol on human breast carcinoma by immunohistochemical analysis.

Sample: Paraffin-embedded human breast carcinoma.

TXNL2 antibody [N2C3] (GTX118339) dilution: 1:200.

Antigen Retrieval: Trilogy™ (EDTA based, pH 8.0) buffer, 15min



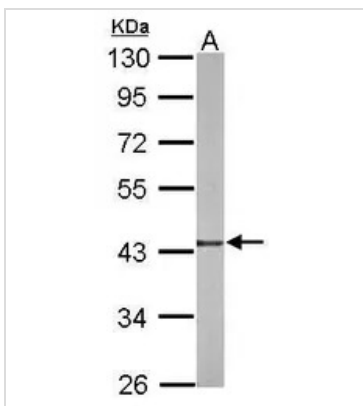
GTX118339 WB Image

Sample (30 ug of whole cell lysate)

A: Raji

10% SDS PAGE

GTX118339 diluted at 1:10000



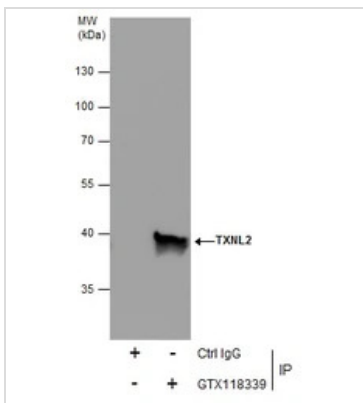
GTX118339 WB Image

Sample (50 ug of whole cell lysate)

A: mouse brain

10% SDS PAGE

GTX118339 diluted at 1:1000



GTX118339 IP Image

Immunoprecipitation of TXNL2 protein from 293T whole cell extracts using 5 µg of TXNL2 antibody [N2C3] (GTX118339).

Western blot analysis was performed using TXNL2 antibody [N2C3] (GTX118339).

EasyBlot anti-Rabbit IgG (GTX221666-01) was used as a secondary reagent.



For full product information, images and publications, please visit our [website](#).