

TKTL2 antibody [N1N3]

Cat. No. GTX118468

宿主	Rabbit
克隆	Polyclonal
同种型	IgG
实验应用	WB
种属反应	Human, Mouse

引用文献 (1)

实验应用

应用说明

*最佳稀释倍数与浓度应由研究人员确认

Suggested dilution	Recommended dilution
WB	1:500-1:3000

以下为常规应用缩写的中文注解

WB: 免疫印迹

ICC/IF: 细胞染色

IHC-P: 石蜡切片

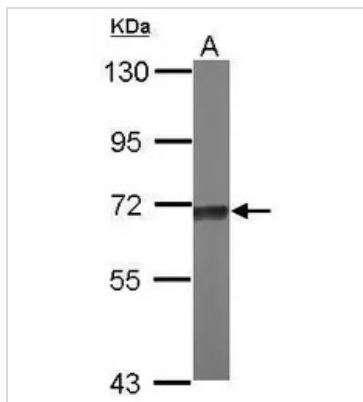
IHC-Fr: 冰冻切片

属性

形式	Liquid
存储溶液	0.1M Tris, 0.1M Glycine, 20% Glycerol
保存剂	0.01% Thimerosal
存放说明	Store as concentrated solution. Centrifuge briefly prior to opening vial. For short-term storage (1-2 weeks), store at 4°C. For long-term storage, aliquot and store at -20°C or below. Avoid multiple freeze-thaw cycles.
浓度	1 mg/ml (Please refer to the vial label for the specific concentration.)
偶联	Unconjugated
RRID	AB_10624801
注意事项	仅供实验室使用。不适用于人类或动物的任何临床，治疗或诊断用途。不适合动物或人类食用。

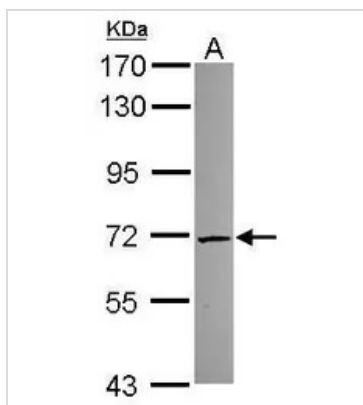
For full product information, images and publications, please visit our [website](#).

產品图片



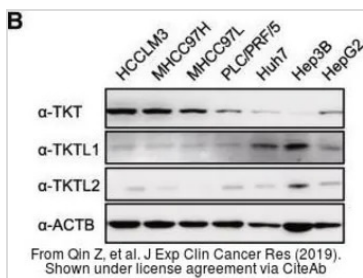
GTX118468 WB Image

Sample (50 ug of whole cell lysate)
 A: Mouse brain
 7.5% SDS PAGE
 GTX118468 diluted at 1:1000



GTX118468 WB Image

Sample (30 ug of whole cell lysate)
 A: 293T
 7.5% SDS PAGE
 GTX118468 diluted at 1:2000



GTX118468 WB Image

The data was published in the journal J Exp Clin Cancer Res in 2019. [PMID: 30971297](https://pubmed.ncbi.nlm.nih.gov/30971297/)



For full product information, images and publications, please visit our [website](https://www.genetex.com).