

PTGR1 antibody [N1C2]

Cat. No. GTX118527

宿主	Rabbit
克隆	Polyclonal
同种型	IgG
实验应用	WB
种属反应	Human

引用文献 (1)

★★★★☆ 产品评论 (1)

实验应用

应用说明

*最佳稀释倍数与浓度应由研究人员确认

Suggested dilution	Recommended dilution
WB	1:500-1:3000

以下为常规应用缩写的中文注解

WB: 免疫印迹

ICC/IF: 细胞染色

IHC-P: 石蜡切片

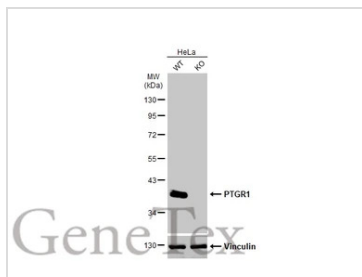
IHC-Fr: 冰冻切片

属性

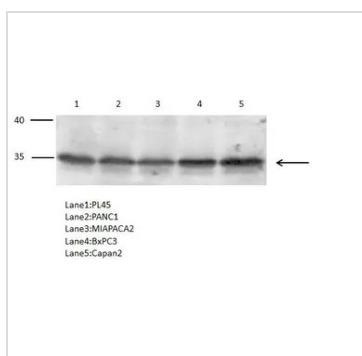
形式	Liquid
存储溶液	0.1M Tris, 0.1M Glycine, 20% Glycerol
保存剂	0.01% Thimerosal
存放说明	Store as concentrated solution. Centrifuge briefly prior to opening vial. For short-term storage (1-2 weeks), store at 4°C. For long-term storage, aliquot and store at -20°C or below. Avoid multiple freeze-thaw cycles.
浓度	0.93 mg/ml (Please refer to the vial label for the specific concentration.)
偶联	Unconjugated
RRID	AB_10618960
注意事项	仅供实验室使用。不适用于人类或动物的任何临床，治疗或诊断用途。不适合动物或人类食用。

For full product information, images and publications, please visit our [website](#).

產品圖片

**GTX118527 WB Image**

Wild-type (WT) and PTGR1 knockout (KO) HeLa cell extracts (30 μ g) were separated by 10% SDS-PAGE, and the membrane was blotted with PTGR1 antibody [N1C2] (GTX118527) diluted at 1:500. The HRP-conjugated anti-rabbit IgG antibody (GTX213110-01) was used to detect the primary antibody.

**GTX118527 WB Image**

Prostaglandin reductase 1 antibody [N1C2] detects Prostaglandin reductase 1 protein by Western blot analysis.

- A. 40 μ g PL45 whole cell lysate/extract
- B. 40 μ g PANC1 whole cell lysate/extract
- C. 40 μ g MIAPACA2 whole cell lysate/extract
- D. 40 μ g BxPC3 whole cell lysate/extract
- E. 40 μ g Capan2 whole cell lysate/extract

Prostaglandin reductase 1 antibody [N1C2] (GTX118527) dilution: 1:500



For full product information, images and publications, please visit our [website](#).