

CHD1L antibody [N2C1], Internal

Cat. No. GTX119360

宿主	Rabbit
克隆	Polyclonal
同种型	IgG
实验应用	WB, IP
种属反应	Human

实验应用

应用说明

*最佳稀释倍数与浓度应由研究人员确认

Suggested dilution	Recommended dilution
WB	1:1000-1:10000
IP	1:100-1:500

以下为常规应用缩写的中文注解

WB: 免疫印迹

ICC/IF: 细胞染色

IHC-P: 石蜡切片

IHC-Fr: 冰冻切片

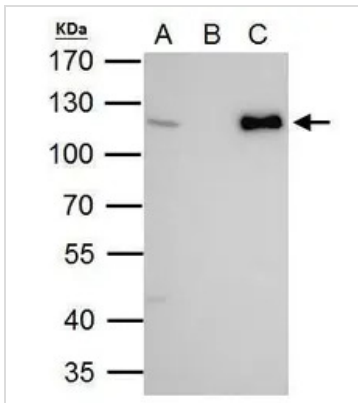
属性

形式	Liquid
存储溶液	PBS, 20% Glycerol
保存剂	0.01% Thimerosal
存放说明	Store as concentrated solution. Centrifuge briefly prior to opening vial. For short-term storage (1-2 weeks), store at 4°C. For long-term storage, aliquot and store at -20°C or below. Avoid multiple freeze-thaw cycles.
浓度	1.02 mg/ml (Please refer to the vial label for the specific concentration.)
偶联	Unconjugated
RRID	AB_11179692
注意事项	仅供实验室使用。不适用于人类或动物的任何临床, 治疗或诊断用途。不适合动物或人类食用。

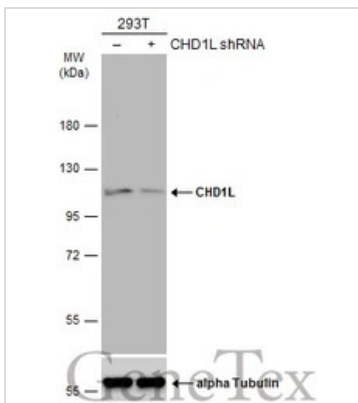


For full product information, images and publications, please visit our [website](#).

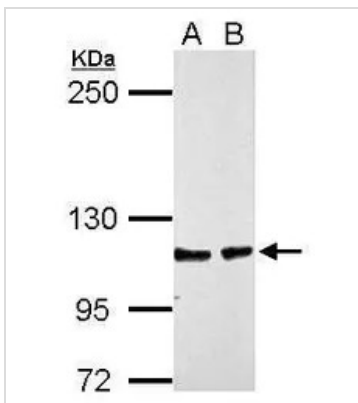
產品圖片

**GTX119360 IP Image**

CHD1L antibody immunoprecipitates CHD1L protein in IP experiments. IP Sample: 293T whole cell lysate/extract A. 40 μ g 293T whole cell lysate/extract B. Control with 2 μ g of preimmune rabbit IgG C. Immunoprecipitation of CHD1L protein by 2 μ g of CHD1L antibody (GTX119360) 7.5% SDS-PAGE The immunoprecipitated CHD1L protein was detected by CHD1L antibody (GTX119360) diluted at 1:1000. EasyBlot anti-rabbit IgG (GTX221666-01) was used as a secondary reagent.

**GTX119360 WB Image**

Non-transfected (-) and transfected (+) 293T whole cell extracts (30 μ g) were separated by 7.5% SDS-PAGE, and the membrane was blotted with CHD1L antibody [N2C1], Internal (GTX119360) diluted at 1:5000. The HRP-conjugated anti-rabbit IgG antibody (GTX213110-01) was used to detect the primary antibody.

**GTX119360 WB Image**

Sample (30 μ g of whole cell lysate)
A: HepG2
B: HepG2 nucleus
5% SDS PAGE
GTX119360 diluted at 1:3000



For full product information, images and publications, please visit our [website](#).