

ARS2 antibody

Cat. No. GTX119872

宿主	Rabbit
克隆	Polyclonal
同种型	IgG
实验应用	WB, ICC/IF, IHC-P, IP
种属反应	Human

引用文献 (8)

实验应用

应用说明

*最佳稀释倍数与浓度应由研究人员确认

Suggested dilution	Recommended dilution
WB	1:1000-1:20000
ICC/IF	1:100-1:1000
IHC-P	1:100-1:1000
IP	Assay dependent

以下为常规应用缩写的中文注解

WB: 免疫印迹

ICC/IF: 细胞染色

IHC-P: 石蜡切片

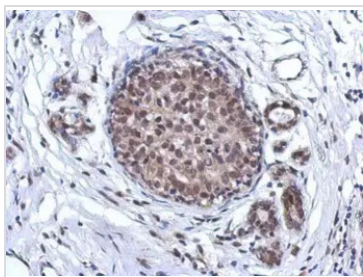
IHC-Fr: 冰冻切片

属性

形式	Liquid
存储溶液	0.1M Tris, 0.1M Glycine, 20% Glycerol
保存剂	0.01% Thimerosal
存放说明	Store as concentrated solution. Centrifuge briefly prior to opening vial. For short-term storage (1-2 weeks), store at 4°C. For long-term storage, aliquot and store at -20°C or below. Avoid multiple freeze-thaw cycles.
浓度	0.76 mg/ml (Please refer to the vial label for the specific concentration.)
偶联	Unconjugated
RRID	AB_10720168
注意事项	仅供实验室使用。不适用于人类或动物的任何临床、治疗或诊断用途。不适合动物或人类食用。

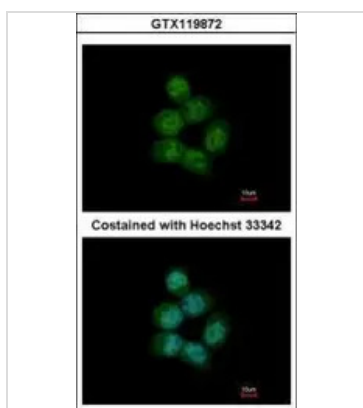
For full product information, images and publications, please visit our [website](#).

產品圖片

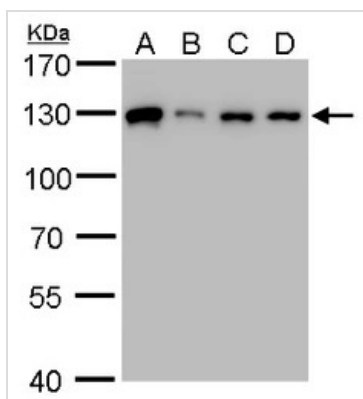
**GTX119872 IHC-P Image**

Immunohistochemical analysis of paraffin-embedded human breast cancer, using ARS2(GTX119872) antibody at 1:500 dilution.

Antigen Retrieval: Trilogy™ (EDTA based, pH 8.0) buffer, 15min

**GTX119872 ICC/IF Image**

Immunofluorescence analysis of paraformaldehyde-fixed A431, using ARS2(GTX119872) antibody at 1:500 dilution.

**GTX119872 WB Image**

ARS2 antibody detects ARS2 protein by western blot analysis.

A. 30 μ g 293T whole cell lysate/extract

B. 30 μ g A431 whole cell lysate/extract

C. 30 μ g HeLa whole cell lysate/extract

D. 30 μ g HepG2 whole cell lysate/extract

7.5 % SDS-PAGE

ARS2 antibody (GTX119872) dilution: 1:1000



For full product information, images and publications, please visit our [website](#).