

FAM171A1 antibody [C1C3]

Cat. No. GTX120226

宿主	Rabbit
克隆	Polyclonal
同种型	IgG
实验应用	WB, ICC/IF, IHC-P
种属反应	Human

引用文献 (3)

实验应用

应用说明

*最佳稀释倍数与浓度应由研究人员确认

Suggested dilution	Recommended dilution
WB	1:500-1:3000
ICC/IF	1:100-1:1000
IHC-P	1:100-1:1000

以下为常规应用缩写的中文注解

WB: 免疫印迹

ICC/IF: 细胞染色

IHC-P: 石蜡切片

IHC-Fr: 冰冻切片

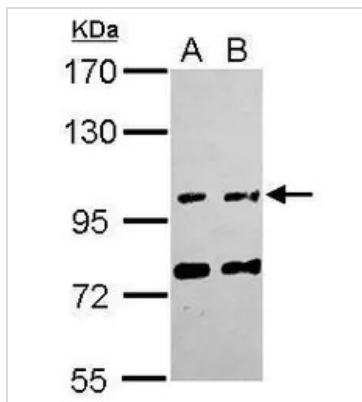
属性

形式	Liquid
存储溶液	PBS, 1% BSA, 20% Glycerol
保存剂	0.01% Thimerosal
存放说明	Store as concentrated solution. Centrifuge briefly prior to opening vial. For short-term storage (1-2 weeks), store at 4°C. For long-term storage, aliquot and store at -20°C or below. Avoid multiple freeze-thaw cycles.
浓度	1 mg/ml (Please refer to the vial label for the specific concentration.)
偶联	Unconjugated
RRID	AB_10720303
注意事项	仅供实验室使用。不适用于人类或动物的任何临床, 治疗或诊断用途。不适合动物或人类食用。



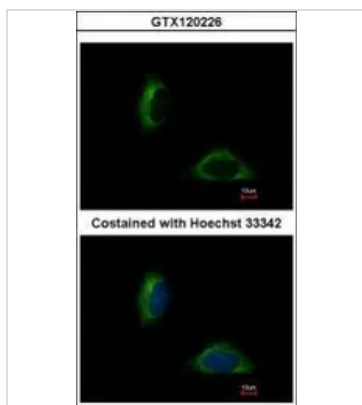
For full product information, images and publications, please visit our [website](#).

產品圖片



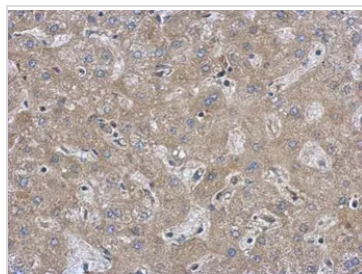
GTX120226 WB Image

Sample (30 ug of whole cell lysate)
 A: HepG2
 B: HCT116
 7.5% SDS PAGE
 GTX120226 diluted at 1:1000



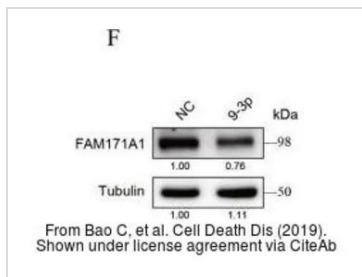
GTX120226 ICC/IF Image

Immunofluorescence analysis of methanol-fixed HeLa, using FAM171A1(GTX120226) antibody at 1:500 dilution.



GTX120226 IHC-P Image

Immunohistochemical analysis of paraffin-embedded human hepatoma, using FAM171A1(GTX120226) antibody at 1:500 dilution.
 Antigen Retrieval: Trilogy™ (EDTA based, pH 8.0) buffer, 15min



GTX120226 WB Image

The data was published in the journal Cell Death Dis in 2019. [PMID: 31649243](https://pubmed.ncbi.nlm.nih.gov/31649243/)



For full product information, images and publications, please visit our [website](https://www.genetex.com).