

CEP70 antibody

Cat. No. GTX120594

宿主	Rabbit
克隆	Polyclonal
同种型	IgG
实验应用	WB, ICC/IF
种属反应	Human

实验应用

应用说明

*最佳稀释倍数与浓度应由研究人员确认

Suggested dilution	Recommended dilution
WB	1:500-1:3000
ICC/IF	1:100-1:1000

以下为常规应用缩写的中文注解

WB: 免疫印迹

ICC/IF: 细胞染色

IHC-P: 石蜡切片

IHC-Fr: 冰冻切片

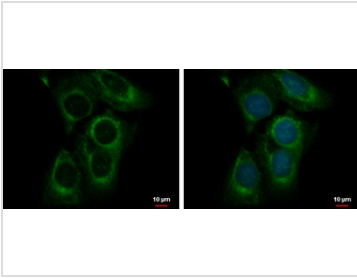
属性

形式	Liquid
存储溶液	0.1M Tris, 0.1M Glycine, 20% Glycerol
保存剂	0.01% Thimerosal
存放说明	Store as concentrated solution. Centrifuge briefly prior to opening vial. For short-term storage (1-2 weeks), store at 4°C. For long-term storage, aliquot and store at -20°C or below. Avoid multiple freeze-thaw cycles.
浓度	0.84 mg/ml (Please refer to the vial label for the specific concentration.)
偶联	Unconjugated
RRID	AB_2885500
注意事项	仅供实验室使用。不适用于人类或动物的任何临床, 治疗或诊断用途。不适合动物或人类食用。



For full product information, images and publications, please visit our [website](#).

產品圖片

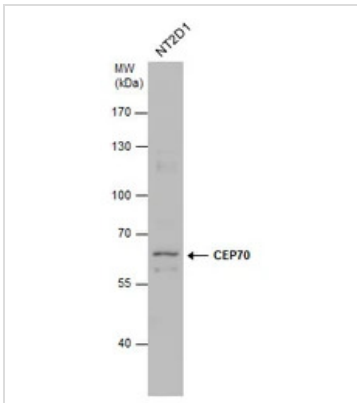
**GTX120594 ICC/IF Image**

CEP70 antibody detects CEP70 protein at cytoplasm by immunofluorescent analysis.

Sample: NT2D1 cells were fixed in ice-cold MeOH for 5 min.

Green: CEP70 protein stained by CEP70 antibody (GTX120594) diluted at 1:500.

Blue: Hoechst 33342 staining.

**GTX120594 WB Image**

CEP70 antibody detects CEP70 protein by western blot analysis. Whole cell extracts (30 μg) was separated by 7.5% SDS-PAGE, and the membrane was blotted with CEP70 antibody (GTX120594) at a dilution of 1:1000.



For full product information, images and publications, please visit our [website](#).