

GPRASP2 antibody [C2C3], C-term

Cat. No. GTX120670

宿主	Rabbit
克隆	Polyclonal
同种型	IgG
实验应用	WB, IHC-P
种属反应	Human

实验应用

应用说明

*最佳稀释倍数与浓度应由研究人员确认

Suggested dilution	Recommended dilution
WB	1:500-1:3000
IHC-P	1:100-1:1000

以下为常规应用缩写的中文注解

WB: 免疫印迹

ICC/IF: 细胞染色

IHC-P: 石蜡切片

IHC-Fr: 冰冻切片

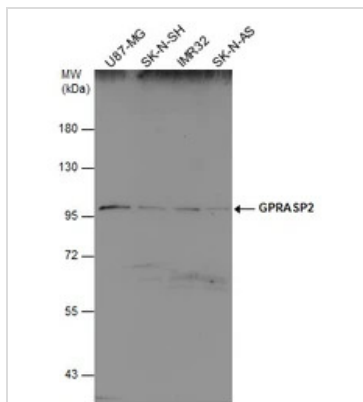
属性

形式	Liquid
存储溶液	PBS, 1% BSA, 20% Glycerol
保存剂	0.01% Thimerosal
存放说明	Store as concentrated solution. Centrifuge briefly prior to opening vial. For short-term storage (1-2 weeks), store at 4°C. For long-term storage, aliquot and store at -20°C or below. Avoid multiple freeze-thaw cycles.
浓度	1 mg/ml (Please refer to the vial label for the specific concentration.)
偶联	Unconjugated
RRID	AB_11166169
注意事项	仅供实验室使用。不适用于人类或动物的任何临床, 治疗或诊断用途。不适合动物或人类食用。



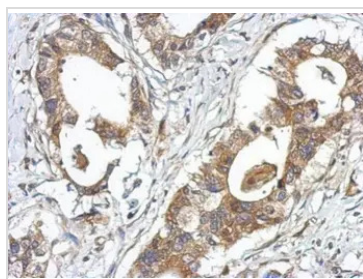
For full product information, images and publications, please visit our [website](#).

產品圖片



GTX120670 WB Image

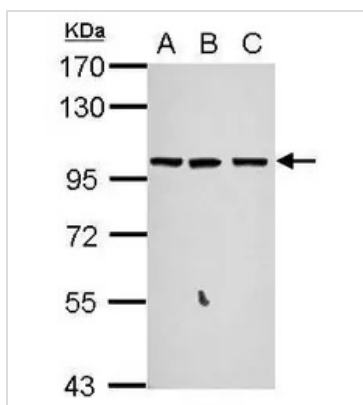
Various whole cell extracts (30 µg) were separated by 7.5% SDS-PAGE, and the membrane was blotted with GPRASP2 antibody [C2C3], C-term (GTX120670) diluted at 1:500.



GTX120670 IHC-P Image

Immunohistochemical analysis of paraffin-embedded human gastric cancer, using GPRASP2(GTX120670) antibody at 1:500 dilution.

Antigen Retrieval: Trilogy™ (EDTA based, pH 8.0) buffer, 15min



GTX120670 WB Image

Sample (30 ug of whole cell lysate)

A: A549

B: H1299

C: MCF-7

7.5% SDS PAGE

GTX120670 diluted at 1:1000



For full product information, images and publications, please visit our [website](#).