

KIAA0391 antibody

Cat. No. GTX121658

| | |
|------|------------|
| 宿主 | Rabbit |
| 克隆 | Polyclonal |
| 同种型 | IgG |
| 实验应用 | WB, ICC/IF |
| 种属反应 | Human |

实验应用

应用说明

*最佳稀释倍数与浓度应由研究人员确认

| Suggested dilution | Recommended dilution |
|--------------------|----------------------|
| WB | 1:1000-1:10000 |
| ICC/IF | 1:100-1:1000 |

以下为常规应用缩写的中文注解

WB: 免疫印迹

ICC/IF: 细胞染色

IHC-P: 石蜡切片

IHC-Fr: 冰冻切片

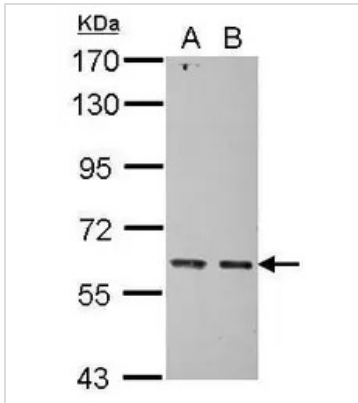
属性

| | |
|------|--|
| 形式 | Liquid |
| 存储溶液 | PBS, 1% BSA, 20% Glycerol |
| 保存剂 | 0.01% Thimerosal |
| 存放说明 | Store as concentrated solution. Centrifuge briefly prior to opening vial. For short-term storage (1-2 weeks), store at 4°C. For long-term storage, aliquot and store at -20°C or below. Avoid multiple freeze-thaw cycles. |
| 浓度 | 1 mg/ml (Please refer to the vial label for the specific concentration.) |
| 偶联 | Unconjugated |
| RRID | AB_11171069 |
| 注意事项 | 仅供实验室使用。不适用于人类或动物的任何临床, 治疗或诊断用途。不适合动物或人类食用。 |



For full product information, images and publications, please visit our [website](#).

產品圖片

**GTX121658 WB Image**

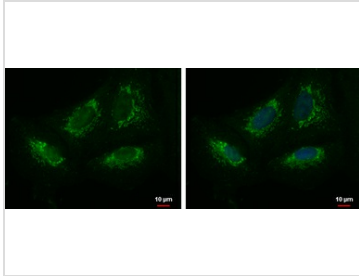
Sample (30 ug of whole cell lysate)

A: U87-MG

B: SK-N-SH

7.5% SDS PAGE

GTX121658 diluted at 1:5000

**GTX121658 ICC/IF Image**

KIAA0391 antibody detects KIAA0391 protein at mitochondria by immunofluorescent analysis.

Sample: A549 cells were fixed in 2% paraformaldehyde/culture medium at 37°C for 30 min.

Green: KIAA0391 protein stained by KIAA0391 antibody (GTX121658) diluted at 1:500.

Blue: Hoechst 33342 staining.

Scale bar = 10 μm.



For full product information, images and publications, please visit our [website](#).