

MRPL15 antibody

Cat. No. GTX122571

宿主	Rabbit
克隆	Polyclonal
同种型	IgG
实验应用	WB
种属反应	Human, Mouse

引用文献 (1)

实验应用

应用说明

*最佳稀释倍数与浓度应由研究人员确认

Suggested dilution	Recommended dilution
WB	1:500-1:3000

以下为常规应用缩写的中文注解

WB: 免疫印迹

ICC/IF: 细胞染色

IHC-P: 石蜡切片

IHC-Fr: 冰冻切片

属性

形式 Liquid

存储溶液 PBS, 1% BSA, 20% Glycerol

保存剂 0.01% Thimerosal

存放说明 Store as concentrated solution. Centrifuge briefly prior to opening vial. For short-term storage (1-2 weeks), store at 4°C. For long-term storage, aliquot and store at -20°C or below. Avoid multiple freeze-thaw cycles.

浓度 1 mg/ml (Please refer to the vial label for the specific concentration.)

偶联 Unconjugated

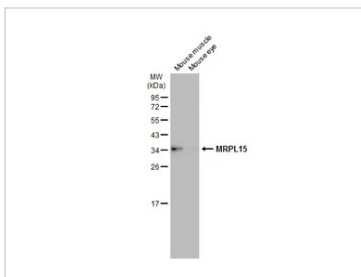
RRID AB_11178779

注意事项 仅供实验室使用。不适用于人类或动物的任何临床，治疗或诊断用途。不适合动物或人类食用。

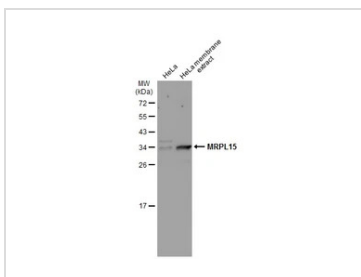


For full product information, images and publications, please visit our [website](#).

產品圖片

**GTX122571 WB Image**

Various tissue extracts (50 μ g) were separated by 12% SDS-PAGE, and the membrane was blotted with MRPL15 antibody (GTX122571) diluted at 1:500. The HRP-conjugated anti-rabbit IgG antibody (GTX213110-01) was used to detect the primary antibody, and the signal was developed with Trident ECL plus-Enhanced.

**GTX122571 WB Image**

HeLa whole cell and membrane extracts (30 μ g) were separated by 12% SDS-PAGE, and the membrane was blotted with MRPL15 antibody (GTX122571) diluted at 1:500. The HRP-conjugated anti-rabbit IgG antibody (GTX213110-01) was used to detect the primary antibody, and the signal was developed with Trident ECL plus-Enhanced.



For full product information, images and publications, please visit our [website](#).