

## ROCK2 (phospho Ser1366) antibody

Cat. No. GTX122651

宿主	Rabbit
克隆	Polyclonal
同种型	IgG
实验应用	WB, ICC/IF, IHC-P, IHC-Fr, Immunoassay
种属反应	Human, Mouse, Rat

引用文献 ( 15 )

## 实验应用

## 应用说明

\*最佳稀释倍数与浓度应由研究人员确认

Suggested dilution	Recommended dilution
WB	1:500-1:3000
ICC/IF	1:100-1:1000
IHC-P	1:100-1:1000
IHC-Fr	Assay dependent
Immunoassay	Assay dependent

以下为常规应用缩写的中文注解

WB: 免疫印迹

ICC/IF: 细胞染色

IHC-P: 石蜡切片

IHC-Fr: 冰冻切片

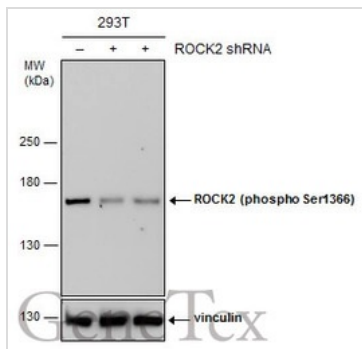
## 属性

形式	Liquid
存储溶液	PBS, 1% BSA, 20% Glycerol
保存剂	0.025% ProClin 300
存放说明	Store as concentrated solution. Centrifuge briefly prior to opening vial. For short-term storage (1-2 weeks), store at 4°C. For long-term storage, aliquot and store at -20°C or below. Avoid multiple freeze-thaw cycles.
浓度	1.46 mg/ml (Please refer to the vial label for the specific concentration.)
偶联	Unconjugated
RRID	AB_2560946
注意事项	仅供实验室使用。不适用于人类或动物的任何临床、治疗或诊断用途。不适合动物或人类食用。

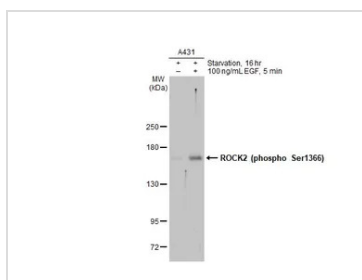


For full product information, images and publications, please visit our [website](#).

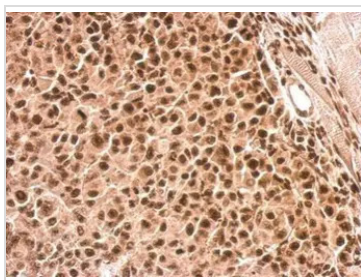
## 產品圖片

**GTX122651 WB Image**

Non-transfected (-) and transfected (+) 293T whole cell extracts (30 µg) were separated by 5% SDS-PAGE, and the membrane was blotted with ROCK2 (phospho Ser1366) antibody (GTX122651) diluted at 1:500. The HRP-conjugated anti-rabbit IgG antibody (GTX213110-01) was used to detect the primary antibody.

**GTX122651 WB Image**

Untreated (-) and treated (+) A431 whole cell extracts (30 µg) were separated by 5% SDS-PAGE, and the membrane was blotted with ROCK2 (phospho Ser1366) antibody (GTX122651) diluted at 1:1000. The HRP-conjugated anti-rabbit IgG antibody (GTX213110-01) was used to detect the primary antibody, and the signal was developed with Trident ECL plus-Enhanced.

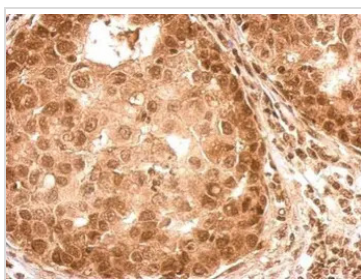
**GTX122651 IHC-P Image**

ROCK2 (phospho Ser1366) antibody detects ROCK2 protein at nucleus and cytosol on HBL435 xenograft by immunohistochemical analysis.

Sample: Paraffin-embedded HBL435 xenograft.

ROCK2 (phospho Ser1366) antibody (GTX122651) dilution: 1:500.

Antigen Retrieval: Trilogy™ (EDTA based, pH 8.0) buffer, 15min

**GTX122651 IHC-P Image**

ROCK2 (phospho Ser1366) antibody detects ROCK2 protein at weak nucleus and cytosol on human breast tissue by immunohistochemical analysis.

Sample: Paraffin-embedded human breast tissue.

ROCK2 (phospho Ser1366) antibody (GTX122651) dilution: 1:500.

Antigen Retrieval: Trilogy™ (EDTA based, pH 8.0) buffer, 15min



For full product information, images and publications, please visit our [website](#).