

## SLU7 (phospho Ser513/Ser515) antibody

Cat. No. GTX125960

宿主	Rabbit
克隆	Polyclonal
同种型	IgG
实验应用	ICC/IF
种属反应	Human

## 实验应用

## 应用说明

\*最佳稀释倍数与浓度应由研究人员确认

Suggested dilution	Recommended dilution
ICC/IF	1:100-1:1000

以下为常规应用缩写的中文注解

WB: 免疫印迹

ICC/IF: 细胞染色

IHC-P: 石蜡切片

IHC-Fr: 冰冻切片

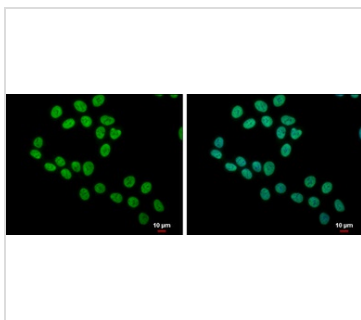
## 属性

形式	Liquid
存储溶液	PBS, 1% BSA, 20% Glycerol
保存剂	0.01% Thimerosal
存放说明	Store as concentrated solution. Centrifuge briefly prior to opening vial. For short-term storage (1-2 weeks), store at 4°C. For long-term storage, aliquot and store at -20°C or below. Avoid multiple freeze-thaw cycles.
浓度	1.04 mg/ml (Please refer to the vial label for the specific concentration.)
偶联	Unconjugated
RRID	AB_2885619
注意事项	仅供实验室使用。不适用于人类或动物的任何临床，治疗或诊断用途。不适合动物或人类食用。



For full product information, images and publications, please visit our [website](#).

## 產品圖片

**GTX125960 ICC/IF Image**

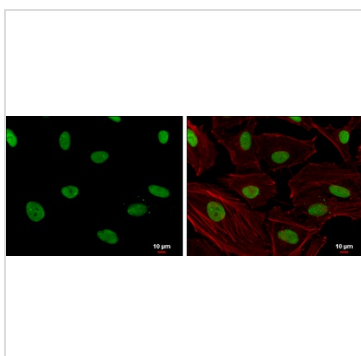
Slu7 (phospho Ser513/Ser515) antibody detects Slu7 (phospho Ser513/Ser515) protein at nucleus by immunofluorescent analysis.

Sample: HCT116 cells were fixed in 4% paraformaldehyde at RT for 15 min.

Green: Slu7 (phospho Ser513/Ser515) protein stained by Slu7 (phospho Ser513/Ser515) antibody (GTX125960) diluted at 1:500.

Blue: Hoechst 33342 staining.

Scale bar = 10 µm.

**GTX125960 ICC/IF Image**

Slu7 (phospho Ser513/Ser515) antibody detects Slu7 (phospho Ser513/Ser515) protein at nucleus by immunofluorescent analysis.

Sample: HeLa cells were fixed in 4% paraformaldehyde at RT for 15 min.

Green: Slu7 (phospho Ser513/Ser515) protein stained by Slu7 (phospho Ser513/Ser515) antibody (GTX125960) diluted at 1:500.

Red: phalloidin, a cytoskeleton marker, diluted at 1:200.

Blue: Hoechst 33342 staining.

Scale bar = 10 µm.



For full product information, images and publications, please visit our [website](#).