

ARD1A antibody

Cat. No. GTX125971

宿主	Rabbit
克隆	Polyclonal
同种型	IgG
实验应用	WB, ICC/IF, IHC-P, IP
种属反应	Human, Mouse

引用文献 (3)

实验应用

应用说明

*最佳稀释倍数与浓度应由研究人员确认

Suggested dilution	Recommended dilution
WB	1:500-1:10000
ICC/IF	1:100-1:1000
IHC-P	1:100-1:1000
IP	1:100-1:500

以下为常规应用缩写的中文注解

WB: 免疫印迹

ICC/IF: 细胞染色

IHC-P: 石蜡切片

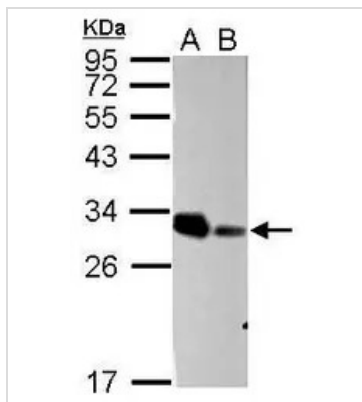
IHC-Fr: 冰冻切片

属性

形式	Liquid
存储溶液	PBS, 20% Glycerol
保存剂	0.025% ProClin 300
存放说明	Store as concentrated solution. Centrifuge briefly prior to opening vial. For short-term storage (1-2 weeks), store at 4°C. For long-term storage, aliquot and store at -20°C or below. Avoid multiple freeze-thaw cycles.
浓度	0.97 mg/ml (Please refer to the vial label for the specific concentration.)
偶联	Unconjugated
RRID	AB_11166967
注意事项	仅供实验室使用。不适用于人类或动物的任何临床, 治疗或诊断用途。不适合动物或人类食用。

For full product information, images and publications, please visit our [website](#).

產品圖片



GTX125971 WB Image

Sample (30 µg of whole cell lysate)

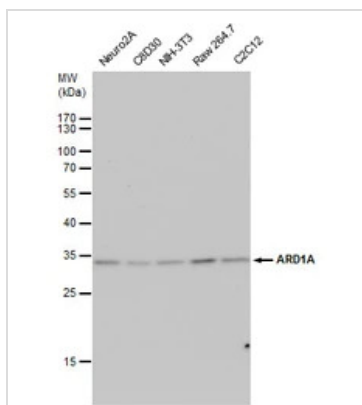
A: H1299 transfected scramble siRNA

B: H1299 transfected ARDIA siRNA

12% SDS PAGE

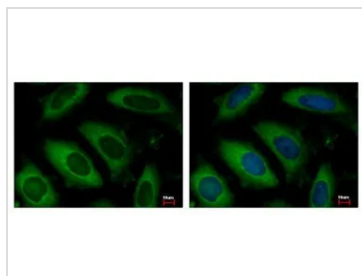
GTX125971 diluted at 1:5000

The HRP-conjugated anti-rabbit IgG antibody (GTX213110-01) was used to detect the primary antibody.



GTX125971 WB Image

ARD1A antibody detects ARD1A protein by western blot analysis. Various whole cell extracts (30 µg) were separated by 12% SDS-PAGE, and blotted with ARD1A antibody (GTX125971) diluted by 1:1000. The HRP-conjugated anti-rabbit IgG antibody (GTX213110-01) was used to detect the primary antibody.



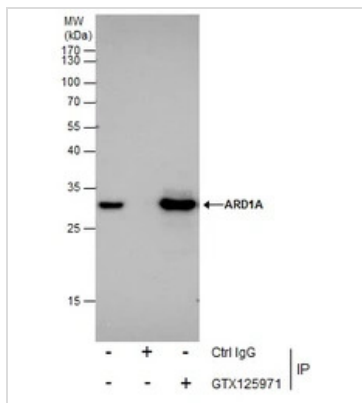
GTX125971 ICC/IF Image

ARD1A antibody detects NAA10 protein at Cytoplasm by immunofluorescent analysis.

Sample: HeLa cells were fixed in -20°C 100% MeOH for 5 min.

Green: NAA10 protein stained by ARD1A antibody (GTX125971) diluted at 1:500.

Blue: Hoechst 33343 staining.



GTX125971 IP Image

Immunoprecipitation of ARD1A protein from HeLa whole cell extracts using 5 µg of ARD1A antibody (GTX125971).

Western blot analysis was performed using ARD1A antibody (GTX125971) diluted at 1:500.

EasyBlot anti-Rabbit IgG (GTX221666-01) was used as a secondary reagent.



For full product information, images and publications, please visit our [website](#).