

## DCTD antibody

Cat. No. GTX127971

宿主	Rabbit
克隆	Polyclonal
同种型	IgG
实验应用	WB, ICC/IF, IHC-P
种属反应	Human, Mouse

## 实验应用

## 应用说明

\*最佳稀释倍数与浓度应由研究人员确认

Suggested dilution	Recommended dilution
WB	1:1000-1:10000
ICC/IF	Assay dependent
IHC-P	1:100-1:1000

以下为常规应用缩写的中文注解

WB: 免疫印迹

ICC/IF: 细胞染色

IHC-P: 石蜡切片

IHC-Fr: 冰冻切片

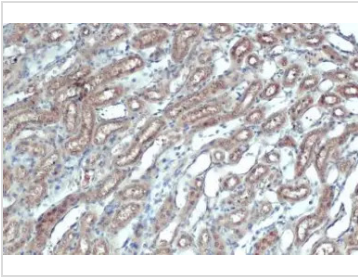
## 属性

形式	Liquid
存储溶液	PBS, 20% Glycerol
保存剂	0.025% ProClin 300
存放说明	Store as concentrated solution. Centrifuge briefly prior to opening vial. For short-term storage (1-2 weeks), store at 4°C. For long-term storage, aliquot and store at -20°C or below. Avoid multiple freeze-thaw cycles.
浓度	1.19 mg/ml (Please refer to the vial label for the specific concentration.)
偶联	Unconjugated
RRID	AB_2885666
注意事项	仅供实验室使用。不适用于人类或动物的任何临床, 治疗或诊断用途。不适合动物或人类食用。



For full product information, images and publications, please visit our [website](#).

## 產品圖片

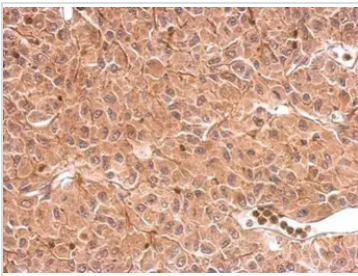
**GTX127971 IHC-P Image**

DCTD antibody detects DCTD protein at cytoplasm by immunohistochemical analysis.

Sample: Paraffin-embedded mouse kidney.

DCTD stained by DCTD antibody (GTX127971) diluted at 1:500.

Antigen Retrieval: Citrate buffer, pH 6.0, 15 min

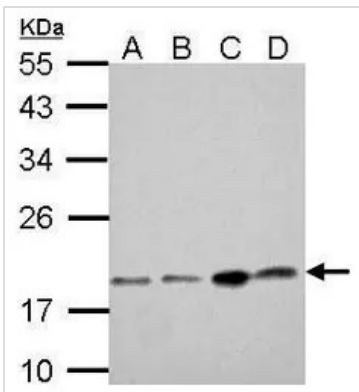
**GTX127971 IHC-P Image**

DCTD antibody detects DCTD protein at cytosol on U87 xenograft by immunohistochemical analysis.

Sample: Paraffin-embedded U87 xenograft.

DCTD antibody (GTX127971) dilution: 1:500.

Antigen Retrieval: Trilogy™ (EDTA based, pH 8.0) buffer, 15min

**GTX127971 WB Image**

DCTD antibody detects DCTD protein by Western blot analysis.

A. 30 µg NT2D1 whole cell lysate/extract

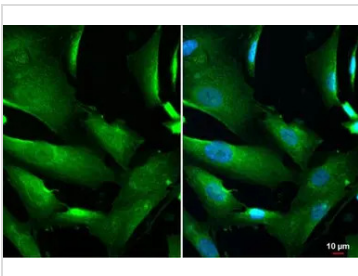
B. 30 µg PC-3 whole cell lysate/extract

C. 30 µg U87-MG whole cell lysate/extract

D. 30 µg SK-N-SH whole cell lysate/extract

12% SDS PAGE

DCTD antibody (GTX127971) dilution: 1:1000

**GTX127971 ICC/IF Image**

DCTD antibody detects DCTD protein at nucleus, cytoplasm and endoplasmic reticulum by immunofluorescent analysis.

Sample: SK-N-SH cells were fixed in 4% paraformaldehyde at RT for 15 min.

Green: DCTD stained by DCTD antibody (GTX127971) diluted at 1:500.

Blue: Fluoroshield with DAPI (GTX30920).



For full product information, images and publications, please visit our [website](#).