

SQSTM1 / P62 (phospho Ser403) antibody

Cat. No. GTX128171

宿主	Rabbit
克隆	Polyclonal
同种型	IgG
实验应用	WB, ICC/IF, IHC-P, FCM, IHC
种属反应	Human, Mouse, Rat

引用文献 (24)

★★★★★ 产品评论 (2)

实验应用

应用说明

*最佳稀释倍数与浓度应由研究人员确认

Suggested dilution	Recommended dilution
WB	1:500-1:3000
ICC/IF	1:100-1:1000
IHC-P	1:100-1:1000
FCM	1:50-1:200
IHC	Assay dependent

以下为常规应用缩写的中文注解

WB: 免疫印迹

ICC/IF: 细胞染色

IHC-P: 石蜡切片

IHC-Fr: 冰冻切片

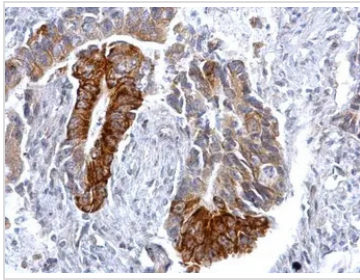
属性

形式	Liquid
存储溶液	PBS, 1% BSA, 20% Glycerol
保存剂	0.025% ProClin 300
存放说明	Store as concentrated solution. Centrifuge briefly prior to opening vial. For short-term storage (1-2 weeks), store at 4°C. For long-term storage, aliquot and store at -20°C or below. Avoid multiple freeze-thaw cycles.
浓度	0.08 mg/ml (Please refer to the vial label for the specific concentration.)
偶联	Unconjugated
RRID	AB_2885723
注意事项	仅供实验室使用。不适用于人类或动物的任何临床、治疗或诊断用途。不适合动物或人类食用。



For full product information, images and publications, please visit our [website](#).

產品圖片



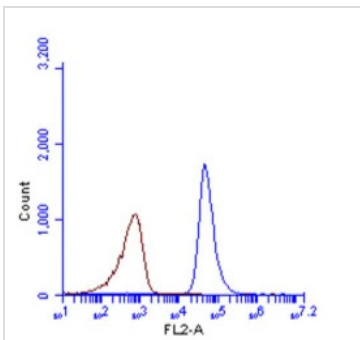
GTX128171 IHC-P Image

SQSTM1 (phospho Ser403) antibody detects SQSTM1 (phospho Ser403) protein at cytosol on human colon carcinoma by immunohistochemical analysis.

Sample: Paraffin-embedded human colon carcinoma.

SQSTM1 (phospho Ser403) antibody (GTX128171) dilution: 1:500.

Antigen Retrieval: Trilogy™ (EDTA based, pH 8.0) buffer, 15min



GTX128171 FCM Image

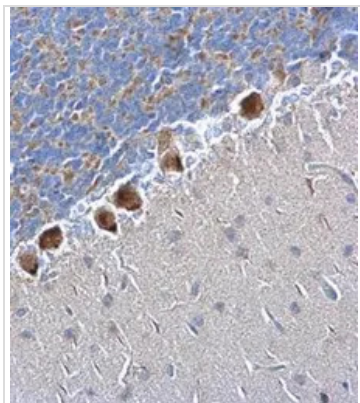
SQSTM1 (phospho Ser403) antibody (GTX128171) detects SQSTM1 (phospho Ser403) protein by flow cytometry analysis.

Sample: HeLa cell fixed in 4% paraformaldehyde at 4oC for 5 min.

Brown: Unlabelled sample was also used as a control.

Blue: SQSTM1 (phospho Ser403) antibody (GTX128171) dilution: 1:100.

Acquisition of >20,000 events were collected using Argon ion laser (488nm) and 525/30 bandpass filter.



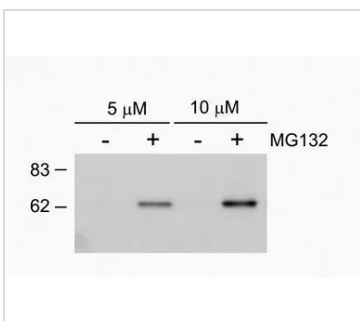
GTX128171 IHC-P Image

SQSTM1 (phospho Ser403) antibody detects SQSTM1 (phospho Ser403) protein at nucleus on rat hind brain by immunohistochemical analysis.

Sample: Paraffin-embedded rat hind brain.

SQSTM1 (phospho Ser403) antibody (GTX128171) dilution: 1:500.

Antigen Retrieval: Trilogy™ (EDTA based, pH 8.0) buffer, 15min



GTX128171 WB Image

SQSTM1 (phospho Ser403) antibody detects SQSTM1 (phospho Ser403) protein by western blot analysis.

A. 30 μg Huh7 whole cell lysate/extract (untreated)

B. 30 μg Huh7 whole cell lysate/extract (5 μM MG132)

C. 30 μg Huh7 whole cell lysate/extract (untreated)

D. 30 μg Huh7 whole cell lysate/extract (10 μM MG132)

SQSTM1 (phospho Ser403) antibody (GTX128171) dilution: 1:500

The HRP-conjugated anti-rabbit IgG antibody (GTX213110-01) was used to detect the primary antibody.



For full product information, images and publications, please visit our [website](#).