

ZAP70 (phospho Tyr292) antibody

Cat. No. GTX12868

宿主	Rabbit
克隆	Polyclonal
同种型	IgG
实验应用	WB, IHC-P
种属反应	Human

实验应用

应用说明

*最佳稀释倍数与浓度应由研究人员确认

Suggested dilution	Recommended dilution
WB	Assay dependent
IHC-P	1:20

以下为常规应用缩写的中文注解

WB: 免疫印迹

ICC/IF: 细胞染色

IHC-P: 石蜡切片

IHC-Fr: 冰冻切片

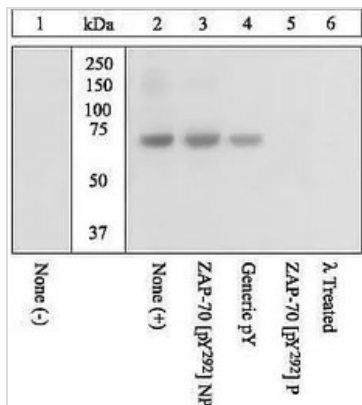
属性

形式	Liquid
存储溶液	PBS, 0.1% BSA, 50% Glycerol
保存剂	0.05% Sodium azide
存放说明	Store as concentrated solution. Centrifuge briefly prior to opening vial. For short-term storage (1-2 weeks), store at 4°C. For long-term storage, aliquot and store at -20°C or below. Avoid multiple freeze-thaw cycles.
浓度	Batch dependent (Please refer to the vial label for the specific concentration.)
偶联	Unconjugated
注意事项	仅供实验室使用。不适用于人类或动物的任何临床、治疗或诊断用途。不适合动物或人类食用。



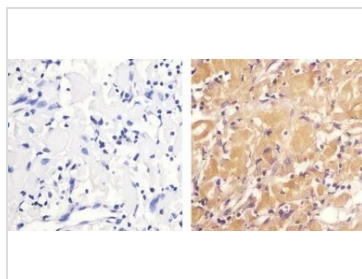
For full product information, images and publications, please visit our [website](#).

產品圖片



GTX12868 WB Image

WB (peptide competition) analysis of Jurkat cells treated with hydrogen peroxide (Lane 2-6) using GTX12868 ZAP70 (phospho Tyr292) antibody prior incubated with the non-phosphopeptide corresponding to the immunogen (Lane 2), a generic phosphotyrosine-containing peptide (Lane 4) or, the phosphopeptide immunogen (Lane 5) control. The data show that only the immunogen phosphopeptide blocks the signal, demonstrating the specificity of the antibody. The membrane treated with phosphatase (Lane 6) eliminates the signal further verifying that the antibody is phospho-specific.



GTX12868 IHC-P Image

IHC-P analysis of human lymph node tissue using GTX12868 ZAP70 (phospho Tyr292) antibody.
 Right : Primary antibody
 Left : Negative control without primary antibody
 Antigen retrieval : 10mM sodium citrate (pH 6.0), microwaved for 8-15 min
 Dilution : 1:20



For full product information, images and publications, please visit our [website](#).