

CD155 antibody

Cat. No. GTX129578

宿主	Rabbit
克隆	Polyclonal
同种型	IgG
实验应用	WB
种属反应	Human

实验应用

应用说明

*最佳稀释倍数与浓度应由研究人员确认

Suggested dilution	Recommended dilution
WB	1:500-1:3000

以下为常规应用缩写的中文注解

WB: 免疫印迹

ICC/IF: 细胞染色

IHC-P: 石蜡切片

IHC-Fr: 冰冻切片

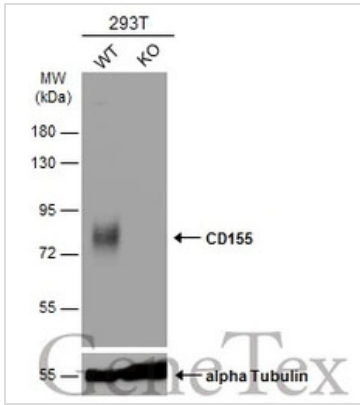
属性

形式	Liquid
存储溶液	PBS, 20% Glycerol
保存剂	0.025% ProClin 300
存放说明	Store as concentrated solution. Centrifuge briefly prior to opening vial. For short-term storage (1-2 weeks), store at 4°C. For long-term storage, aliquot and store at -20°C or below. Avoid multiple freeze-thaw cycles.
浓度	1 mg/ml (Please refer to the vial label for the specific concentration.)
偶联	Unconjugated
RRID	AB_2886039
注意事项	仅供实验室使用。不适用于人类或动物的任何临床，治疗或诊断用途。不适合动物或人类食用。



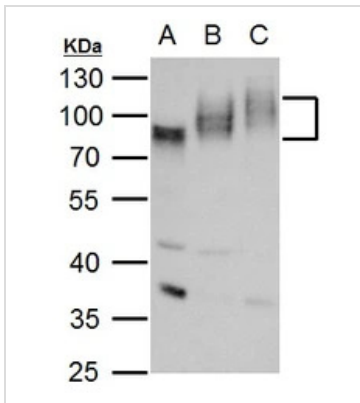
For full product information, images and publications, please visit our [website](#).

產品圖片



GTX129578 WB Image

Wild-type (WT) and CD155 knockout (KO) 293T cell extracts (30 µg) were separated by 10% SDS-PAGE, and the membrane was blotted with CD155 antibody (GTX129578) diluted at 1:500. The HRP-conjugated anti-rabbit IgG antibody (GTX213110-01) was used to detect the primary antibody.

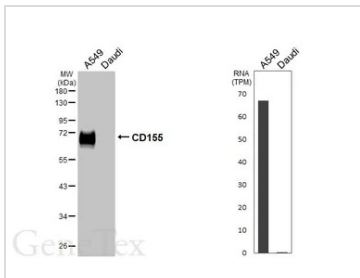


GTX129578 WB Image

CD155 antibody detects CD155 protein by western blot analysis.

- A. 30 µg K562 whole cell lysate/extract
 - B. 30 µg THP-1 whole cell lysate/extract
 - C. 30 µg HL-60 whole cell lysate/extract
- 10 % SDS-PAGE

CD155 antibody (GTX129578) dilution: 1:1000



GTX129578 WB Image

Various whole cell extracts (30 µg) were separated by 10% SDS-PAGE, and the membrane was blotted with CD155 antibody (GTX129578) diluted at 1:1000. The HRP-conjugated anti-rabbit IgG antibody (GTX213110-01) was used to detect the primary antibody. Corresponding RNA expression data are based on Human Protein Atlas program.



For full product information, images and publications, please visit our [website](#).