

RBM5 antibody

Cat. No. GTX129783

宿主	Rabbit
克隆	Polyclonal
同种型	IgG
实验应用	WB, IP
种属反应	Human

实验应用

应用说明

*最佳稀释倍数与浓度应由研究人员确认

Suggested dilution	Recommended dilution
WB	1:500-1:3000
IP	1:100-1:500

以下为常规应用缩写的中文注解

WB: 免疫印迹

ICC/IF: 细胞染色

IHC-P: 石蜡切片

IHC-Fr: 冰冻切片

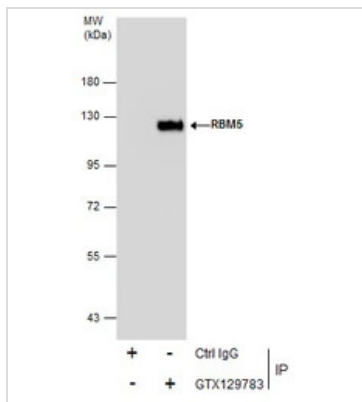
属性

形式	Liquid
存储溶液	PBS, 20% Glycerol
保存剂	0.025% ProClin 300
存放说明	Store as concentrated solution. Centrifuge briefly prior to opening vial. For short-term storage (1-2 weeks), store at 4°C. For long-term storage, aliquot and store at -20°C or below. Avoid multiple freeze-thaw cycles.
浓度	1 mg/ml (Please refer to the vial label for the specific concentration.)
偶联	Unconjugated
RRID	AB_2886088
注意事项	仅供实验室使用。不适用于人类或动物的任何临床, 治疗或诊断用途。不适合动物或人类食用。



For full product information, images and publications, please visit our [website](#).

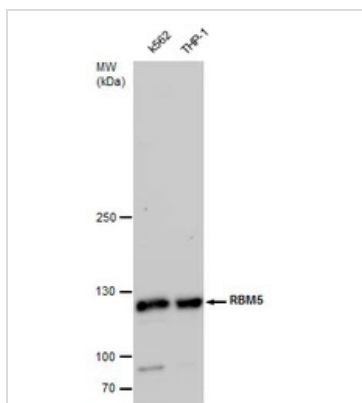
產品圖片

**GTX129783 IP Image**

Immunoprecipitation of RBM5 protein from 293T whole cell extracts using 5 μ g of RBM5 antibody (GTX129783).

Western blot analysis was performed using RBM5 antibody (GTX129783).

EasyBlot anti-Rabbit IgG (GTX221666-01) was used as a secondary reagent.

**GTX129783 WB Image**

RBM5 antibody detects RBM5 protein by western blot analysis. Various whole cell extracts (30 μ g) were separated by 5 % SDS-PAGE, and blotted with RBM5 antibody (GTX129783) diluted by 1:1000



For full product information, images and publications, please visit our [website](#).