

## TPR antibody

**Cat. No. GTX130142**

宿主	Rabbit
克隆	Polyclonal
同种型	IgG
实验应用	WB, ICC/IF
种属反应	Human, Mouse

## 实验应用

## 应用说明

\*最佳稀释倍数与浓度应由研究人员确认

Suggested dilution	Recommended dilution
WB	1:500-1:3000
ICC/IF	1:100-1:1000

以下为常规应用缩写的中文注解

WB: 免疫印迹

ICC/IF: 细胞染色

IHC-P: 石蜡切片

IHC-Fr: 冰冻切片

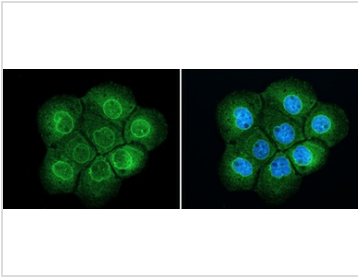
## 属性

形式	Liquid
存储溶液	PBS, 20% Glycerol
保存剂	0.025% ProClin 300
存放说明	Store as concentrated solution. Centrifuge briefly prior to opening vial. For short-term storage (1-2 weeks), store at 4°C. For long-term storage, aliquot and store at -20°C or below. Avoid multiple freeze-thaw cycles.
浓度	1.37 mg/ml (Please refer to the vial label for the specific concentration.)
偶联	Unconjugated
RRID	AB_2886191
注意事项	仅供实验室使用。不适用于人类或动物的任何临床, 治疗或诊断用途。不适合动物或人类食用。



For full product information, images and publications, please visit our [website](#).

## 產品圖片

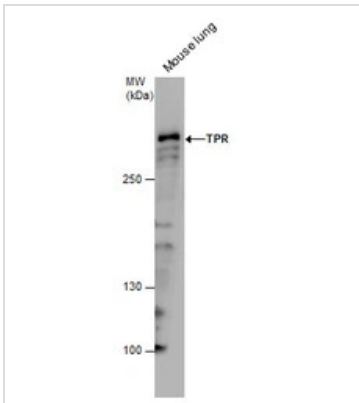
**GTX130142 ICC/IF Image**

TPR antibody detects TPR protein at nuclear envelope and cytoplasm by immunofluorescent analysis.

Sample: A431 cells were fixed in 4% paraformaldehyde at RT for 15 min.

Green: TPR protein stained by TPR antibody (GTX130142) diluted at 1:500.

Blue: Hoechst 33342 staining.

**GTX130142 WB Image**

TPR antibody detects TPR protein by western blot analysis. Mouse tissue extracts (30  $\mu$ g) was separated by 5 % SDS-PAGE, and the membrane was blotted with TPR antibody (GTX130142) at a dilution of 1:500.



For full product information, images and publications, please visit our [website](#).