

ELAC2 antibody

Cat. No. GTX130499

宿主	Rabbit
克隆	Polyclonal
同种型	IgG
实验应用	WB, IHC-P, IP
种属反应	Human

实验应用

应用说明

*最佳稀释倍数与浓度应由研究人员确认

Suggested dilution	Recommended dilution
WB	1:500-1:3000
IHC-P	1:100-1:1000
IP	1:100-1:500

以下为常规应用缩写的中文注解

WB: 免疫印迹

ICC/IF: 细胞染色

IHC-P: 石蜡切片

IHC-Fr: 冰冻切片

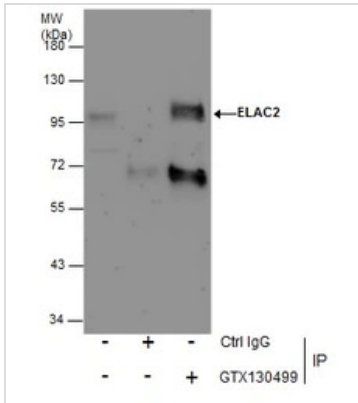
属性

形式	Liquid
存储溶液	PBS, 20% Glycerol
保存剂	0.025% ProClin 300
存放说明	Store as concentrated solution. Centrifuge briefly prior to opening vial. For short-term storage (1-2 weeks), store at 4°C. For long-term storage, aliquot and store at -20°C or below. Avoid multiple freeze-thaw cycles.
浓度	0.73 mg/ml (Please refer to the vial label for the specific concentration.)
偶联	Unconjugated
RRID	AB_2886290
注意事项	仅供实验室使用。不适用于人类或动物的任何临床, 治疗或诊断用途。不适合动物或人类食用。



For full product information, images and publications, please visit our [website](#).

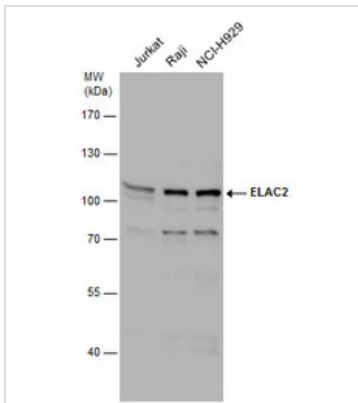
產品圖片

**GTX130499 IP Image**

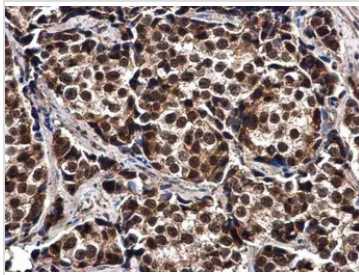
Immunoprecipitation of ELAC2 protein from Jurkat whole cell extracts using 5 μ g of ELAC2 antibody (GTX130499).

Western blot analysis was performed using ELAC2 antibody (GTX130499).

EasyBlot anti-Rabbit IgG (GTX221666-01) was used as a secondary reagent.

**GTX130499 WB Image**

Various whole cell extracts (30 μ g) were separated by 7.5% SDS-PAGE, and the membrane was blotted with ELAC2 antibody (GTX130499) diluted at 1:1000.

**GTX130499 IHC-P Image**

ELAC2 antibody detects ELAC2 protein at cytoplasm and nucleus in human breast carcinoma by immunohistochemical analysis.

Sample: Paraffin-embedded human breast carcinoma.

ELAC2 antibody (GTX130499) diluted at 1:500.

Antigen Retrieval: Citrate buffer, pH 6.0, 15 min



For full product information, images and publications, please visit our [website](#).