

MRP3 antibody

Cat. No. GTX130948

宿主	Rabbit
克隆	Polyclonal
同种型	IgG
实验应用	WB
种属反应	Human, Mouse, Rat

引用文献 (1)

实验应用

应用说明

*最佳稀释倍数与浓度应由研究人员确认

Suggested dilution	Recommended dilution
--------------------	----------------------

WB	1:500-1:3000
----	--------------

以下为常规应用缩写的中文注解

WB: 免疫印迹

ICC/IF: 细胞染色

IHC-P: 石蜡切片

IHC-Fr: 冰冻切片

属性

形式	Liquid
----	--------

存储溶液	PBS, 20% Glycerol
------	-------------------

保存剂	0.025% ProClin 300
-----	--------------------

存放说明	Store as concentrated solution. Centrifuge briefly prior to opening vial. For short-term storage (1-2 weeks), store at 4°C. For long-term storage, aliquot and store at -20°C or below. Avoid multiple freeze-thaw cycles.
------	--

浓度	1.58 mg/ml (Please refer to the vial label for the specific concentration.)
----	---

偶联	Unconjugated
----	--------------

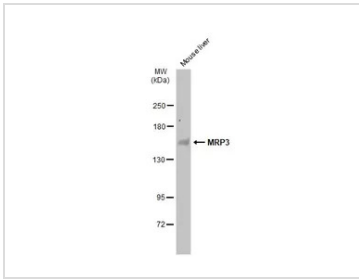
RRID	AB_2886390
------	------------

注意事项	仅供实验室使用。不适用于人类或动物的任何临床，治疗或诊断用途。不适合动物或人类食用。
------	--

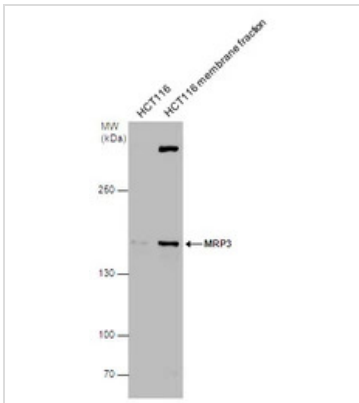


For full product information, images and publications, please visit our [website](#).

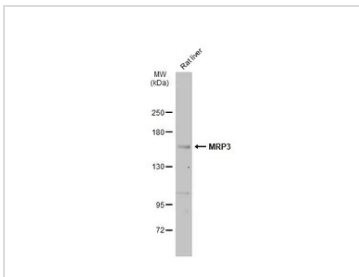
產品圖片

**GTX130948 WB Image**

Mouse tissue extract (50 μ g) was separated by 5% SDS-PAGE, and the membrane was blotted with MRP3 antibody (GTX130948) diluted at 1:500. The HRP-conjugated anti-rabbit IgG antibody (GTX213110-01) was used to detect the primary antibody.

**GTX130948 WB Image**

MRP3 antibody detects MRP3 protein by western blot analysis. HCT116 whole cell extracts and membrane extracts (30 μ g) were separated by 5% SDS-PAGE, and the membrane was blotted with MRP3 antibody (GTX130948) diluted at 1:500.

**GTX130948 WB Image**

Rat tissue extract (50 μ g) was separated by 5% SDS-PAGE, and the membrane was blotted with MRP3 antibody (GTX130948) diluted at 1:500. The HRP-conjugated anti-rabbit IgG antibody (GTX213110-01) was used to detect the primary antibody.



For full product information, images and publications, please visit our [website](#).