

proBNP antibody [5B6]

Cat. No. GTX13111

宿主	Mouse
克隆	Monoclonal
同种型	IgG1
实验应用	WB, ELISA
种属反应	Human

实验应用

应用说明

*最佳稀释倍数与浓度应由研究人员确认

Suggested dilution	Recommended dilution
WB	Assay dependent
ELISA	Assay dependent

以下为常规应用缩写的中文注解

WB: 免疫印迹

ICC/IF: 细胞染色

IHC-P: 石蜡切片

IHC-Fr: 冰冻切片

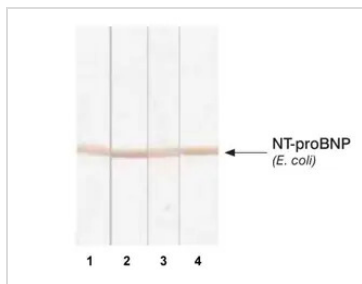
属性

形式	Liquid
存储溶液	PBS
保存剂	0.09% Sodium azide
存放说明	Store as concentrated solution. Centrifuge briefly prior to opening vial. Store at 4°C.
浓度	Batch dependent (Please refer to the vial label for the specific concentration.)
偶联	Unconjugated
注意事项	仅供实验室使用。不适用于人类或动物的任何临床、治疗或诊断用途。不适合动物或人类食用。

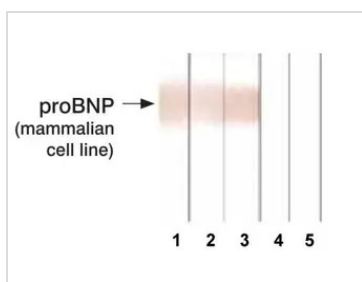


For full product information, images and publications, please visit our [website](#).

產品圖片

**GTX13111 WB Image**

Detection of human recombinant NT-proBNP expressed in *E. coli* in Western blotting by different monoclonal antibodies after Tricine-SDS gel electrophoresis. Antigen: recombinant NT-proBNP expressed in *E. coli*, 2.5 ug; Lane 1: proBNP antibody [5B6] (GTX13111); Lane 2: proBNP antibody [15F11] (GTX13115); Lane 3: proBNP antibody [11D1] (GTX13059); Lane 4: proBNP antibody [24E11] (GTX13123)

**GTX13111 WB Image**

Detection of human recombinant proBNP expressed in mammalian cells in Western blotting by different monoclonal antibodies after Tricine-SDS gel electrophoresis. Antigen: recombinant proBNP expressed in mammalian cells, 0.15 ug; Lane 1: proBNP antibody [5B6] (GTX13111); Lane 2: proBNP antibody [15F11] (GTX13115); Lane 3: proBNP antibody [3G12] (GTX14712); Lane 4: proBNP antibody [11D1] (GTX13059); Lane 5: proBNP antibody [24E11] (GTX13123); Both proBNP antibody [11D1] (GTX13059) and proBNP antibody [24E11] (GTX13123) do not recognize glycosylated proBNP expressed in mammalian cells.



For full product information, images and publications, please visit our [website](#).