

## GPR39 antibody

Cat. No. GTX131599

宿主	Rabbit
克隆	Polyclonal
同种型	IgG
实验应用	WB, IHC-P
种属反应	Human

## 实验应用

## 应用说明

\*最佳稀释倍数与浓度应由研究人员确认

Suggested dilution	Recommended dilution
WB	1:500-1:3000
IHC-P	1:100-1:1000

以下为常规应用缩写的中文注解

WB: 免疫印迹

ICC/IF: 细胞染色

IHC-P: 石蜡切片

IHC-Fr: 冰冻切片

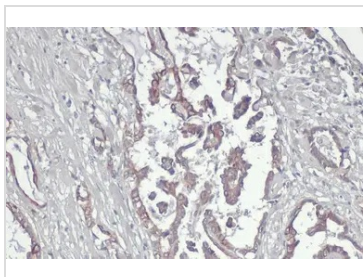
## 属性

形式	Liquid
存储溶液	PBS, 20% Glycerol
保存剂	0.025% ProClin 300
存放说明	Store as concentrated solution. Centrifuge briefly prior to opening vial. For short-term storage (1-2 weeks), store at 4°C. For long-term storage, aliquot and store at -20°C or below. Avoid multiple freeze-thaw cycles.
浓度	0.68 mg/ml (Please refer to the vial label for the specific concentration.)
偶联	Unconjugated
RRID	AB_2886504
注意事项	仅供实验室使用。不适用于人类或动物的任何临床, 治疗或诊断用途。不适合动物或人类食用。



For full product information, images and publications, please visit our [website](#).

## 產品圖片

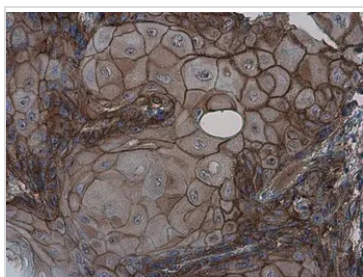
**GTX131599 IHC-P Image**

GPR39 antibody detects GPR39 protein at cell membrane by immunohistochemical analysis.

Sample: Paraffin-embedded human lung cancer.

GPR39 stained by GPR39 antibody (GTX131599) diluted at 1:500.

Antigen Retrieval: Citrate buffer, pH 6.0, 15 min

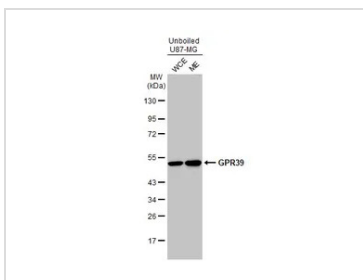
**GTX131599 IHC-P Image**

GPR39 antibody detects GPR39 protein at cell membrane in human oral carcinoma by immunohistochemical analysis.

Sample: Paraffin-embedded human oral carcinoma.

GPR39 antibody (GTX131599) diluted at 1:500.

Antigen Retrieval: Citrate buffer, pH 6.0, 15 min

**GTX131599 WB Image**

Unboiled U87-MG whole cell and membrane extracts (30  $\mu$ g) were separated by 10% SDS-PAGE, and the membrane was blotted with GPR39 antibody (GTX131599) diluted at 1:1000. The HRP-conjugated anti-rabbit IgG antibody (GTX213110-01) was used to detect the primary antibody.



For full product information, images and publications, please visit our [website](#).