

## Tapasin antibody

**Cat. No. GTX13518**

宿主	Rabbit
克隆	Polyclonal
同种型	IgG
实验应用	WB, IP
种属反应	Human, Mouse, Rat, Bovine

## 实验应用

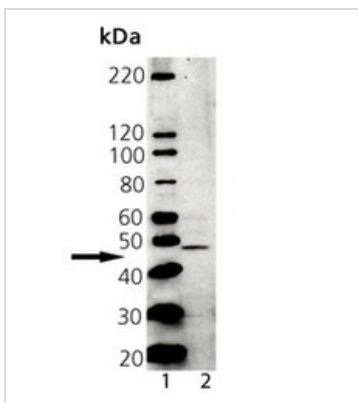
## 应用说明

IP: Use at a dilution of 1/100. WB: Use at a dilution of 1/1000. Detects a band of approximately 48 kDa. Optimal dilutions/concentrations should be determined by the end user.

## 属性

形式	Liquid
存储溶液	PBS, 50% Glycerol
保存剂	0.09% Sodium azide
存放说明	Store as concentrated solution. Centrifuge briefly prior to opening vial. For short-term storage (1-2 weeks), store at 4°C. For long-term storage, aliquot and store at -20°C or below. Avoid multiple freeze-thaw cycles.
浓度	Batch dependent (Please refer to the vial label for the specific concentration.)
偶联	Unconjugated
注意事项	仅供实验室使用。不适用于人类或动物的任何临床，治疗或诊断用途。不适合动物或人类食用。

## 产品图片



## GTX13518 WB Image

Western blot analysis of Tapasin, PAb:

Lane 1: MW marker

Lane 2: A431 Lysate



For full product information, images and publications, please visit our [website](#).