

Human G-CSF protein (active)

Cat. No. GTX138166-pro

实验应用	ELISA, Functional Assay
------	-------------------------

Species	Human
---------	-------

Package

100 µg

产品说明

摘要

G-CSF (Granulocyte-colony stimulating factor/CSF3) is the major growth factor driving the generation of mature granulocytes from committed bone marrow myeloid progenitors. This biologically active recombinant human G-CSF is an 18.7 kDa globular protein formed by a 174-amino acid polypeptide with two intramolecular disulfide bonds. Human and murine G-CSFs are highly similar and show reciprocal biological cross-reactivity.

实验应用

应用说明

Recommended antibody pairs for sandwich ELISA:

Capture: GTX641067 or Detection: GTX641068

Observed MW	15 kDa.
-------------	---------

属性

形式	Lyophilized powder
----	--------------------

存储溶液	Reconstitute with ddH ₂ O to 0.1 mg/ml. Lyophilized from 50mM PBS (pH7.4), 200mM NaCl, 5% Trehalose.
------	---

保存剂	No preservatives
-----	------------------

存放说明	Store at 4°C or below. After reconstitution, keep as concentrated solution. Aliquot and store at -20°C or below. Avoid multiple freeze-thaw cycles. For long-term storage after reconstitution, aliquot and store at -70°C or below. Do not vortex.
------	---

Region/Sequence	Human full-length G-CSF protein (31-204 a.a. of NP_757373.1, signal peptide removed)
-----------------	--

表达系统	E. Coli
------	---------

纯度	>98%
----	------

内毒素	< 1 EU/ug
-----	-----------

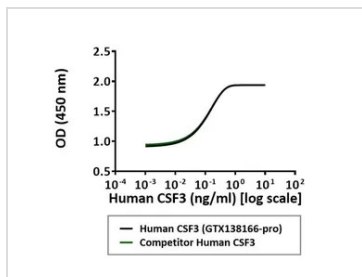
偶联	Unconjugated
----	--------------

注意事项	仅供实验室使用。不适用于人类或动物的任何临床，治疗或诊断用途。不适合动物或人类食用。
------	--



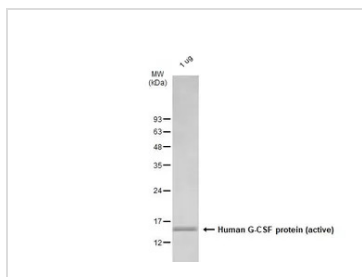
For full product information, images and publications, please visit our [website](#).

產品圖片



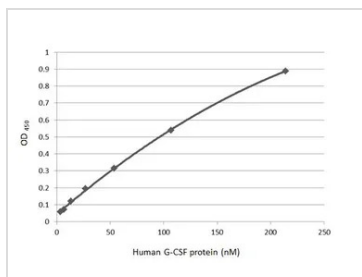
GTX138166-pro Functional Assay Image

Serial dilutions of Human G-CSF protein (active) were added to murine NFS-60 cells. Cell proliferation was measured and the linear portion of the curve was used to calculate the ED50.



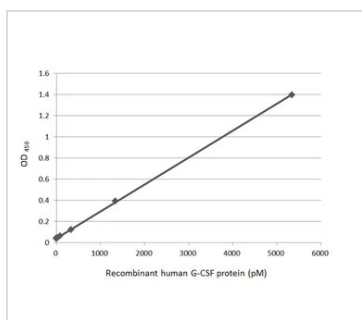
GTX138166-pro Image

1 µg of GTX138166-pro Human G-CSF protein (active) was analyzed using SDS-PAGE and stained with coomassie blue and captured by monochrome camera.



GTX138166-pro ELISA Image

Indirect ELISA analysis was performed by coating the plate with recombinant Human G-CSF protein (active) (GTX138166-pro) (213.9–3.34 nM). Coated protein was probed with G-CSF antibody [GT21] (GTX641067) (1 µg/mL). Goat anti-mouse IgG antibody (HRP) (GTX213111-01) (1:10000) was used to detect the bound primary antibody.



GTX138166-pro ELISA Image

Sandwich ELISA detection of recombinant Human G-CSF protein (active) (GTX138166-pro) using antibodies as below.

Capture: G-CSF antibody [GT21] (GTX641067) (5 µg/mL)

Detection: HRP-conjugated G-CSF antibody [GT22] (GTX641068) (1 µg/mL)

Please notice that GTX641068 needs to be conjugated to HRP to function as the detection antibody when paired with GTX641067. Please contact us for custom HRP-conjugated antibody.



For full product information, images and publications, please visit our [website](#).