

## CD8 antibody [YTS 169.4]

Cat. No. GTX14216

宿主	Rat
克隆	Monoclonal
同种型	IgG2b
实验应用	WB, Depletion
种属反应	Mouse

## 实验应用

## 应用说明

\*最佳稀释倍数与浓度应由研究人员确认

Suggested dilution	Recommended dilution
WB	Assay dependent
Depletion	Assay dependent

## Note : in vivo CD8+ T cell depletion

以下为常规应用缩写的中文注解

WB: 免疫印迹

ICC/IF: 细胞染色

IHC-P: 石蜡切片

IHC-Fr: 冰冻切片

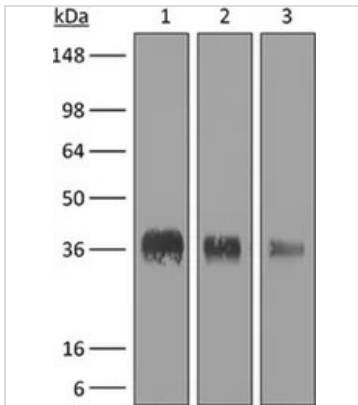
## 属性

形式	Liquid
存储溶液	Filter-sterilized PBS
保存剂	No preservatives
存放说明	Store as concentrated solution. Centrifuge briefly prior to opening vial. Store at 4°C. DO NOT FREEZE.
浓度	Batch dependent (Please refer to the vial label for the specific concentration.)
纯度	>95% (Determined by SDS-PAGE)
内毒素	< 0.002 EU/µg (Determined by LAL assay)
偶联	Unconjugated
注意事项	仅供实验室使用。不适用于人类或动物的任何临床，治疗或诊断用途。不适合动物或人类食用。



For full product information, images and publications, please visit our [website](#).

## 產品圖片

**GTX14216 WB Image**

WB analysis of purified CD8 recombinant protein using GTX14216 CD8 antibody [YTS 169.4].

Lane 1 : 1 ug reduced purified mouse CD8 $\alpha$  with histidine tag at C-terminus

Lane 2 : 0.5 ug reduced purified mouse CD8 $\alpha$  with histidine tag at C-terminus

Lane 3 : 0.25 ug reduced purified mouse CD8 $\alpha$  with histidine tag at C-terminus

Dilution : 8 ug/ml



For full product information, images and publications, please visit our [website](#).