

PDE8B antibody

Cat. No. GTX14621

宿主	Rabbit
克隆	Polyclonal
同种型	IgG
实验应用	WB, ICC/IF, IP, ELISA, IHC
种属反应	Human, Mouse, Rat, Bovine, Monkey

引用文献 (1)

实验应用

应用说明

*最佳稀释倍数与浓度应由研究人员确认

Suggested dilution	Recommended dilution
WB	1:500-1:2000
ICC/IF	1:200
IP	1:250
ELISA	1:10000
IHC	1:200

以下为常规应用缩写的中文注解

WB: 免疫印迹

ICC/IF: 细胞染色

IHC-P: 石蜡切片

IHC-Fr: 冰冻切片

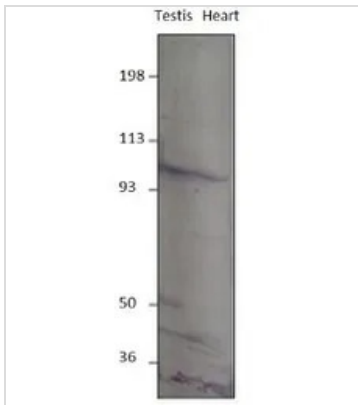
属性

形式	Liquid
存储溶液	Tris/Glycine, 0.5% BSA, 30% Glycerol
保存剂	0.02% Sodium azide
存放说明	Store as concentrated solution. Centrifuge briefly prior to opening vial. For short-term storage (1-2 weeks), store at 4°C. For long-term storage, aliquot and store at -20°C or below. Avoid multiple freeze-thaw cycles.
浓度	0.5 mg/ml (Please refer to the vial label for the specific concentration.)
偶联	Unconjugated
注意事项	仅供实验室使用。不适用于人类或动物的任何临床、治疗或诊断用途。不适合动物或人类食用。



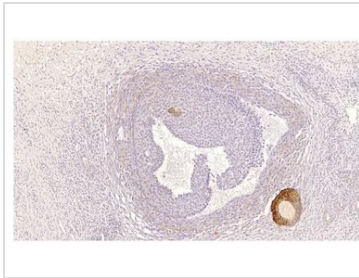
For full product information, images and publications, please visit our [website](#).

產品圖片

**GTX14621 WB Image**

WB analysis of rat testis and heart tissue lysates using GTX14621 PDE8B antibody.

Dilution : 1:300

**GTX14621 IHC Image**

IHC analysis of human ovarian medulla tissue using GTX14621 PDE8B antibody.

Dilution : 1:2000



For full product information, images and publications, please visit our [website](#).