

## Separase antibody [XJ11-1B12]

**Cat. No. GTX16170**

宿主	Mouse
克隆	Monoclonal
同种型	IgG1
实验应用	WB
种属反应	Human, Rat

## 实验应用

## 应用说明

\*最佳稀释倍数与浓度应由研究人员确认

Suggested dilution	Recommended dilution
WB	1:500

以下为常规应用缩写的中文注解

WB: 免疫印迹

ICC/IF: 细胞染色

IHC-P: 石蜡切片

IHC-Fr: 冰冻切片

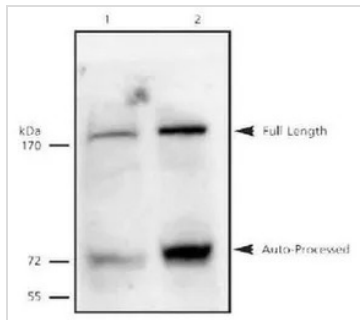
## 属性

形式	Liquid
存储溶液	PBS
保存剂	0.1% Sodium azide
存放说明	Store as concentrated solution. Centrifuge briefly prior to opening vial. For short-term storage (1-2 weeks), store at 4°C. For long-term storage, aliquot and store at -20°C or below. Avoid multiple freeze-thaw cycles.
浓度	0.9 mg/ml (Please refer to the vial label for the specific concentration.)
偶联	Unconjugated
注意事项	仅供实验室使用。不适用于人类或动物的任何临床，治疗或诊断用途。不适合动物或人类食用。



For full product information, images and publications, please visit our [website](#).

## 產品图片

**GTX16170 WB Image**

WB analysis of 5C6 cell lysate using GTX16170 Separase antibody [XJ11-1B12].

Lane 1: non-induced lysate

Lane 2 : lysate induced with ponasterone



For full product information, images and publications, please visit our [website](#).