

Hsp90 beta antibody [3B9-D4-G4]

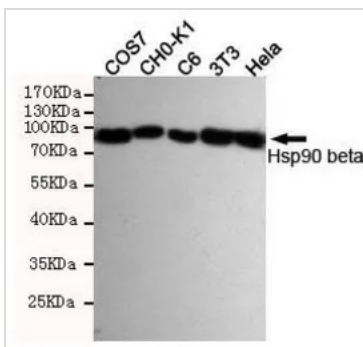
Cat. No. GTX16486

宿主	Mouse
克隆	Monoclonal
同种型	IgG1
实验应用	WB, ICC/IF, IP, Immunodiffusion
种属反应	Human, Mouse, Rat, Hamster, Monkey

属性

形式	Liquid
存储溶液	PBS, 0.5% BSA, 50% glycerol
保存剂	0.02% Sodium azide
存放说明	Store as concentrated solution. Centrifuge briefly prior to opening vial. For short-term storage (1-2 weeks), store at 4°C. For long-term storage, aliquot and store at -20°C or below. Avoid multiple freeze-thaw cycles.
浓度	Batch dependent (Please refer to the vial label for the specific concentration.)
偶联	Unconjugated
注意事项	仅供实验室使用。不适用于人类或动物的任何临床、治疗或诊断用途。不适合动物或人类食用。

产品图片

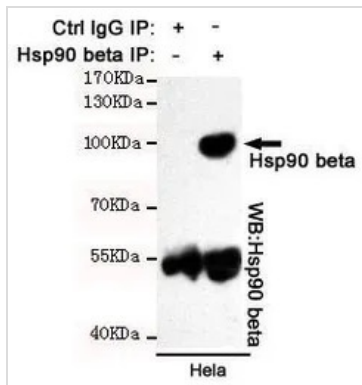


GTX16486 WB Image

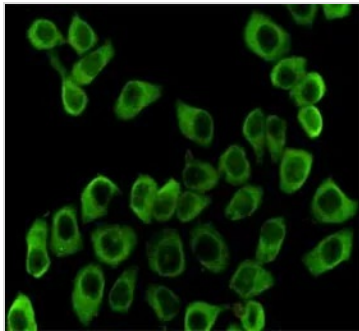
WB analysis of various cell lysates using Hsp90 beta antibody [3B9-D4-G4] at a dilution of 1:2000.



For full product information, images and publications, please visit our [website](#).


GTX16486 IP Image

IP analysis was performed with HeLa lysates and either control IgG or Hsp90 beta antibody [3B9-D4-G4]. The precipitates were detected by the same antibody.


GTX16486 ICC/IF Image

ICC/IF analysis of HeLa cells using anti-Hsp90 beta antibody [3B9-D4-G4] at a dilution of 1:200.



For full product information, images and publications, please visit our [website](#).