

KCNAB2 antibody

Cat. No. GTX16689

宿主	Rabbit
克隆	Polyclonal
同种型	IgG
实验应用	WB, ICC/IF, IHC-Fr
种属反应	Human, Mouse, Rat

实验应用

应用说明

*最佳稀释倍数与浓度应由研究人员确认

Suggested dilution	Recommended dilution
WB	Assay dependent
ICC/IF	Assay dependent
IHC-Fr	Assay dependent

以下为常规应用缩写的中文注解

WB: 免疫印迹

ICC/IF: 细胞染色

IHC-P: 石蜡切片

IHC-Fr: 冰冻切片

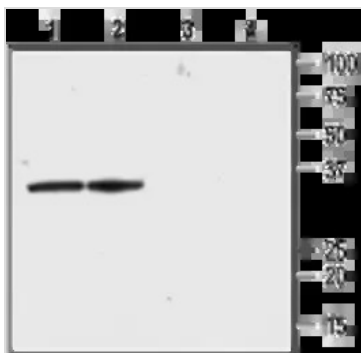
属性

形式	Liquid
存储溶液	PBS, 1% BSA
保存剂	0.025% Sodium azide
存放说明	Store as concentrated solution. Centrifuge briefly prior to opening vial. For short-term storage (1-2 weeks), store at 4°C. For long-term storage, aliquot and store at -20°C or below. Avoid multiple freeze-thaw cycles.
浓度	0.8 mg/ml (Please refer to the vial label for the specific concentration.)
偶联	Unconjugated
注意事项	仅供实验室使用。不适用于人类或动物的任何临床, 治疗或诊断用途。不适合动物或人类食用。



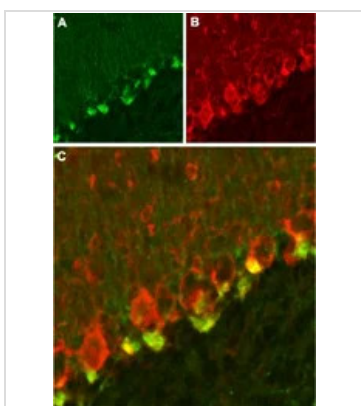
For full product information, images and publications, please visit our [website](#).

產品圖片

**GTX16689 WB Image**

WB analysis of rat brain (lanes 1 and 3) and membranes (lanes 2 and 4) lysates using GTX16689 KCNAB2 antibody preincubated with or without immunogen peptide.

Dilution : 1:200

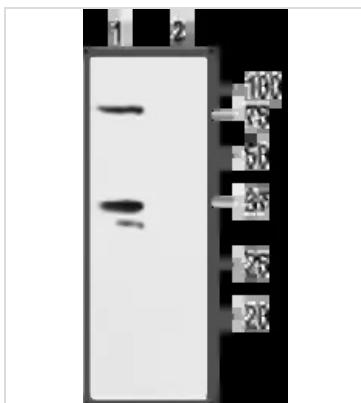
**GTX16689 IHC-Fr Image**

IHC-Fr analysis of mouse cerebellum tissue using GTX16689 KCNAB2 antibody.

Panel A : KVβ2 appears adjacent to Purkinje cells (green).

Panel B : Staining of GABAergic cells with mouse anti-parvalbumin (PV, red).

Panel C : Merge of KVβ2 and PV demonstrates the presence of KVβ2 adjacent to Purkinje cells.

**GTX16689 WB Image**

WB analysis of Jurkat cell lysates using GTX16689 KCNAB2 antibody preincubated with or without immunogen peptide.

Dilution : 1:200



For full product information, images and publications, please visit our [website](#).