

Placental Alkaline Phosphatase antibody [SP15]

Cat. No. GTX16695

宿主	Rabbit
克隆	Monoclonal
同种型	IgG
实验应用	IHC-P, IHC
种属反应	Human, Mouse, Rat

引用文献 (1)

实验应用

应用说明

*最佳稀释倍数与浓度应由研究人员确认

Suggested dilution	Recommended dilution
IHC-P	Assay dependent
IHC	Assay dependent

以下为常规应用缩写的中文注解

WB: 免疫印迹

ICC/IF: 细胞染色

IHC-P: 石蜡切片

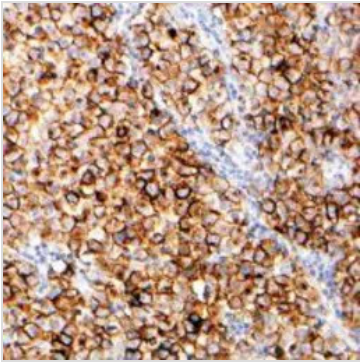
IHC-Fr: 冰冻切片

属性

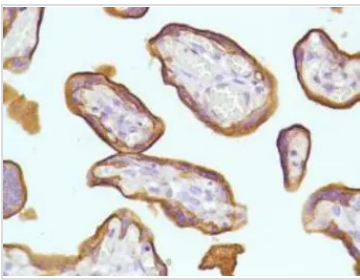
形式	Liquid
存储溶液	Tissue culture supernatant
保存剂	0.09% Sodium azide
存放说明	Store as concentrated solution. Centrifuge briefly prior to opening vial. Store at 4°C.
浓度	Batch dependent (Please refer to the vial label for the specific concentration.)
偶联	Unconjugated
RRID	AB_422354
注意事项	仅供实验室使用。不适用于人类或动物的任何临床, 治疗或诊断用途。不适合动物或人类食用。

For full product information, images and publications, please visit our [website](#).

產品圖片

**GTX16695 IHC Image**

Human Seminoma stained with anti-PLAP antibody

**GTX16695 IHC Image**

Human Placenta stained with anti-PLAP antibody



For full product information, images and publications, please visit our [website](#).