

STX12 antibody [4E212]

Cat. No. GTX18011

| | |
|------|-------------------|
| 宿主 | Mouse |
| 克隆 | Monoclonal |
| 同种型 | IgG |
| 实验应用 | WB, IHC-P |
| 种属反应 | Human, Mouse, Rat |

实验应用

应用说明

*最佳稀释倍数与浓度应由研究人员确认

| Suggested dilution | Recommended dilution |
|--------------------|----------------------|
| WB | 1:1000 |
| IHC-P | Assay dependent |

以下为常规应用缩写的中文注解

WB: 免疫印迹

ICC/IF: 细胞染色

IHC-P: 石蜡切片

IHC-Fr: 冰冻切片

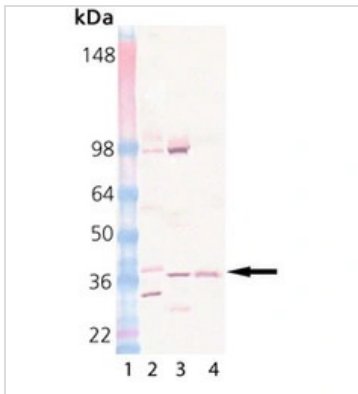
属性

| | |
|------|--|
| 形式 | Liquid |
| 存储溶液 | PBS, 50% Glycerol |
| 保存剂 | 0.09% Sodium azide |
| 存放说明 | Store as concentrated solution. Centrifuge briefly prior to opening vial. For short-term storage (1-2 weeks), store at 4°C. For long-term storage, aliquot and store at -20°C or below. Avoid multiple freeze-thaw cycles. |
| 浓度 | Batch dependent (Please refer to the vial label for the specific concentration.) |
| 偶联 | Unconjugated |
| 注意事项 | 仅供实验室使用。不适用于人类或动物的任何临床，治疗或诊断用途。不适合动物或人类食用。 |

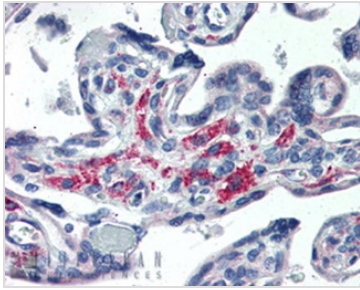


For full product information, images and publications, please visit our [website](#).

產品圖片

**GTX18011 WB Image**

WB analysis of various sample lysates using GTX18011 STX12 antibody [4E212]. Lane 1 : MW Marker Lane 2 : Rat Brain Lysate Lane 3 : Mouse Brain Lysate Lane 4 : CHO-K1 Cell Lysate (Heat Shocked)

**GTX18011 WB Image**

WB analysis of PC-12 cell lysate using GTX18011 STX12 antibody [4E212].



For full product information, images and publications, please visit our [website](#).