

GFP antibody [9F9.F9]

Cat. No. GTX21218

宿主	Mouse
克隆	Monoclonal
同种型	IgG
实验应用	WB, ICC/IF, IHC-Fr, FCM, IP, Dot, ELISA, ChIP assay, IHC, Multiplexing
种属反应	Species independent

引用文献 (11)

实验应用

应用说明

*最佳稀释倍数与浓度应由研究人员确认

Suggested dilution	Recommended dilution
WB	1:3000-1:30000
ICC/IF	Assay dependent
IHC-Fr	1:1000-1:5000
FCM	Assay dependent
IP	Assay dependent
Dot	Assay dependent
ELISA	1:10000-1:30000
ChIP assay	Assay dependent
IHC	1:1000-5000
Multiplexing	Assay dependent

以下为常规应用缩写的中文注解

WB: 免疫印迹

ICC/IF: 细胞染色

IHC-P: 石蜡切片

IHC-Fr: 冰冻切片

属性

形式	Liquid
存储溶液	20mM Potassium Phosphate, 150mM NaCl
保存剂	0.01% Sodium azide
存放说明	Store as concentrated solution. Centrifuge briefly prior to opening vial. For short-term storage (1-2 weeks), store at 4°C. For long-term storage, aliquot and store at -20°C or below. Avoid multiple freeze-thaw cycles.
浓度	1 mg/ml (Please refer to the vial label for the specific concentration.)



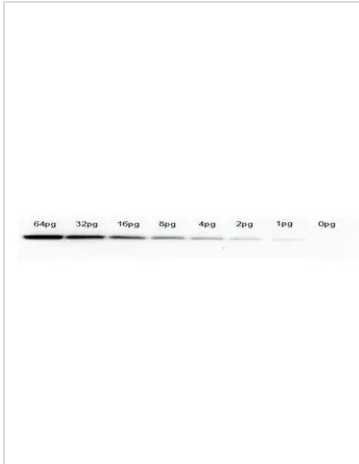
For full product information, images and publications, please visit our [website](#).

偶联 Unconjugated

RRID AB_371417

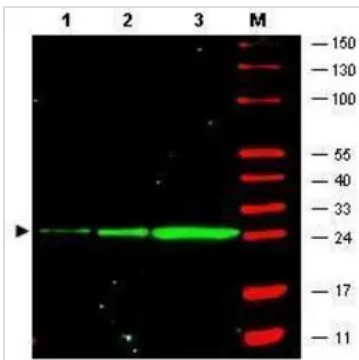
注意事项 仅供实验室使用。不适用于人类或动物的任何临床，治疗或诊断用途。不适合动物或人类食用。

產品图片



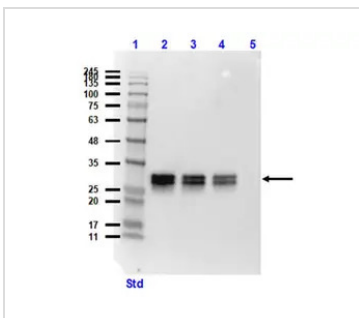
GTX21218 WB Image

Western Blot of anti-GFP monoclonal antibody (GTX21218). Lane 1: 64pg of recombinant GFP protein were spiked into a HeLa cell-derived lysates. Lane 2: 32pg of recombinant GFP protein were spiked into a HeLa cell-derived lysates. Lane 3: 16pg of recombinant GFP protein were spiked into a HeLa cell-derived lysates. Lane 4: 8pg of recombinant GFP protein were spiked into a HeLa cell-derived lysates. Lane 5: 4pg of recombinant GFP protein were spiked into a HeLa cell-derived lysates. Lane 6: 2pg of recombinant GFP protein were spiked into a HeLa cell-derived lysates. Lane 7: 1g of recombinant GFP protein were spiked into a HeLa cell-derived lysates. Lane 8: 0pg of recombinant GFP protein were spiked into a HeLa cell-derived lysates. Primary antibody: anti-GFP monoclonal antibody at 1:400 for overnight at 4°C. Secondary antibody: HRP-conjugated anti-Mouse IgG (GTX26728) was performed at a dilution of 1:20,000 for 1h at 4°C. Block: TTBS supplemented with 1% BSA for 1 h at 4°C. Predicted/Observed size: 27 kDa for GFP. Other band(s): none.



GTX21218 WB Image

Figure: Western blot of GFP recombinant protein detected with GeneTex monoclonal anti-GFP antibody. GFP recombinant protein was expressed in HeLa cells, where 50 ng (lane 1), 100 ng (lane 2) and 500 ng (lane 3) of lysate were loaded per lane. GTX21218 detects a 27 kDa band corresponding to the epitope tag GFP. The membrane was probed with the primary antibody diluted to 1.0 µg/ml for 1 h at room temperature followed by washes and reaction with a 1:2,500 dilution of IRDyeR 800 conjugated goat anti-Mouse IgG [H&L]. IRDyeR 800 fluorescence image was captured using the OdysseyR Infrared Imaging System developed by LI-COR. IRDye is a trademark of LI-COR, Inc. Other detection systems will yield similar results.



GTX21218 WB Image

WB analysis of various samples using GTX21218 GFP antibody [9F9.F9].
 Lane 1 : Protein ladder
 Lane 2 : 50 ng GFP
 Lane 3 : 20 ng GFP
 Lane 4 : 10 ng GFP
 Lane 5 : Mock
 Dilution : 1:1000



For full product information, images and publications, please visit our [website](#).