

## FYN antibody [FYN-01]

Cat. No. GTX21881

宿主	Mouse
克隆	Monoclonal
同种型	IgG2b
实验应用	WB, ICC/IF, IHC-P, IP
种属反应	Human, Mouse

## 实验应用

## 应用说明

\*最佳稀释倍数与浓度应由研究人员确认

Suggested dilution	Recommended dilution
WB	Assay dependent
ICC/IF	Assay dependent
IHC-P	Assay dependent
IP	Assay dependent

以下为常规应用缩写的中文注解

WB: 免疫印迹

ICC/IF: 细胞染色

IHC-P: 石蜡切片

IHC-Fr: 冰冻切片

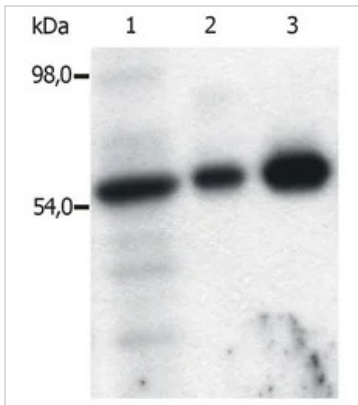
## 属性

形式	Liquid
存储溶液	PBS
保存剂	15mM Sodium azide
存放说明	Store as concentrated solution. Centrifuge briefly prior to opening vial. Store at 4°C. DO NOT FREEZE.
浓度	1 mg/ml (Please refer to the vial label for the specific concentration.)
偶联	Unconjugated
注意事项	仅供实验室使用。不适用于人类或动物的任何临床、治疗或诊断用途。不适合动物或人类食用。



For full product information, images and publications, please visit our [website](#).

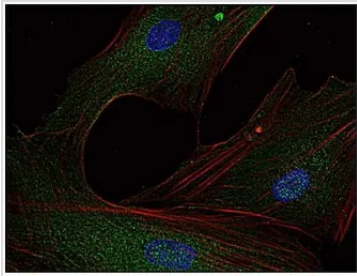
## 產品圖片

**GTX21881 IP Image**

IP analysis of T cells isolated from fresh buffy coats using GTX21881 FYN antibody [FYN-01]. Lanes differ in amount of T cell lysate loaded on the immunosorbent.

Lane 1 : Original lysate of T cells

Lane 2-3 : Immunoprecipitated material eluted from affinity sorbent (FYN-01 coupled to Sepharose beads)

**GTX21881 ICC/IF Image**

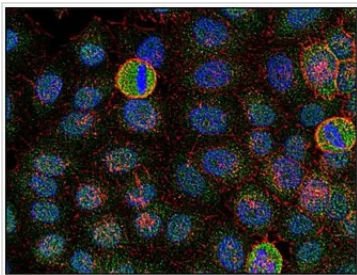
ICC/IF analysis of human primary fibroblasts using GTX21881 FYN antibody [FYN-01].

Green : Primary antibody

Red : Actin

Blue : DAPI

Dilution : 5µg/ml

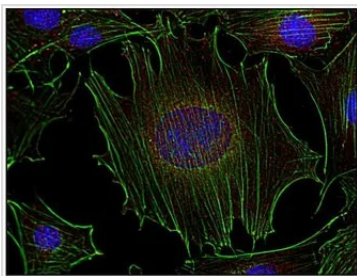
**GTX21881 ICC/IF Image**

ICC/IF analysis of HeLa cells using GTX21881 FYN antibody [FYN-01].

Green : Primary antibody

Red : Actin

Blue : DAPI

**GTX21881 ICC/IF Image**

ICC/IF analysis of mouse transformed fibroblasts using GTX21881 FYN antibody [FYN-01].

Green : Primary antibody

Red : Actin

Blue : DAPI



For full product information, images and publications, please visit our [website](#).