

Sarcalumenin antibody [XIIC4]

Cat. No. GTX22874

宿主	Mouse
克隆	Monoclonal
同种型	IgG1
实验应用	WB, ICC/IF, IHC
种属反应	Human, Mouse, Rabbit, Dog, Guinea pig

实验应用

应用说明

*最佳稀释倍数与浓度应由研究人员确认

Suggested dilution	Recommended dilution
WB	1-3 µg/ml
ICC/IF	1/500
IHC	Assay dependent

以下为常规应用缩写的中文注解

WB: 免疫印迹

ICC/IF: 细胞染色

IHC-P: 石蜡切片

IHC-Fr: 冰冻切片

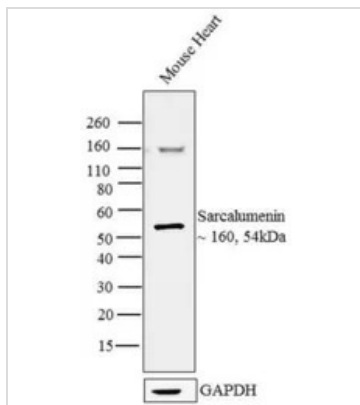
属性

形式	Liquid
存储溶液	buffer
保存剂	0.05% Sodium azide
存放说明	Store as concentrated solution. Centrifuge briefly prior to opening vial. For short-term storage (1-2 weeks), store at 4°C. For long-term storage, aliquot and store at -20°C or below. Avoid multiple freeze-thaw cycles.
浓度	1 mg/ml (Please refer to the vial label for the specific concentration.)
偶联	Unconjugated
注意事项	仅供实验室使用。不适用于人类或动物的任何临床, 治疗或诊断用途。不适合动物或人类食用。



For full product information, images and publications, please visit our [website](#).

產品圖片

**GTX22874 WB Image**

WB analysis of tissue extract (30 μ g lysate) of Mouse Heart using GTX22874 Sarcalumenin antibody [XIIIC4].

Dilution : 2 μ g/ml



For full product information, images and publications, please visit our [website](#).