

Caveolin 1 antibody

Cat. No. GTX22910

宿主	Rabbit
克隆	Polyclonal
同种型	IgG
实验应用	WB, ICC/IF, FCM, IP, IHC
种属反应	Human, Mouse, Rat, Dog, Hamster

实验应用

应用说明

*最佳稀释倍数与浓度应由研究人员确认

Suggested dilution	Recommended dilution
WB	1-2 µg/ml
ICC/IF	1-2 µg/ml
FCM	3-5 µg/10 ⁶ cells
IP	5 µg
IHC	Assay dependent

以下为常规应用缩写的中文注解

WB: 免疫印迹

ICC/IF: 细胞染色

IHC-P: 石蜡切片

IHC-Fr: 冰冻切片

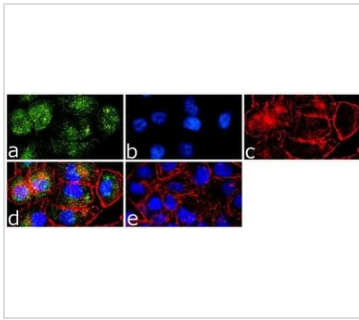
属性

形式	Liquid
存储溶液	PBS, 0.1% BSA
保存剂	0.05% Sodium azide
存放说明	Store as concentrated solution. Centrifuge briefly prior to opening vial. For short-term storage (1-2 weeks), store at 4°C. For long-term storage, aliquot and store at -20°C or below. Avoid multiple freeze-thaw cycles.
浓度	1 mg/ml (Please refer to the vial label for the specific concentration.)
偶联	Unconjugated
注意事项	仅供实验室使用。不适用于人类或动物的任何临床、治疗或诊断用途。不适合动物或人类食用。



For full product information, images and publications, please visit our [website](#).

產品圖片



GTX22910 ICC/IF Image

ICC/IF analysis of A375 cells using GTX22910 Caveolin 1 antibody. Panel e is a no primary antibody control.

Green : Primary antibody

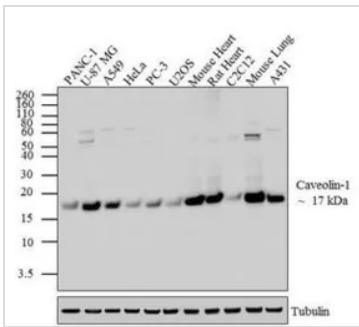
Blue : Nuclei

Red : Actin

Fixation : 4% paraformaldehyde

Permeabilization : 0.25% Triton X-100 for 10 minutes

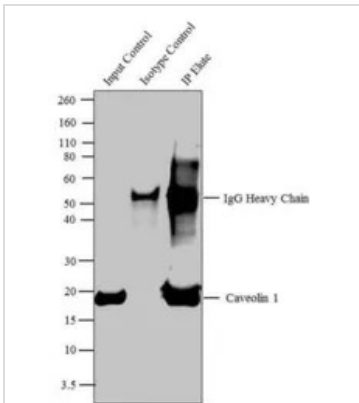
Dilution : 1 µg/ml in 1% BSA and incubated for 3 hours at room temperature



GTX22910 WB Image

WB analysis of whole cell extracts (20 µg lysate) of PANC-1 (Lane 1), U-87 MG (Lane 2), A549 (Lane 3), HeLa (lane4), PC-3 (lane 5), U2OS (lane 6), Mouse Heart (lane 7), Rat Heart (lane 8), C2C12 (lane 9), Mouse Lung (lane 10) and A-431 (lane 11) using GTX22910 Caveolin 1 antibody.

Dilution : 1-2 µg/ml



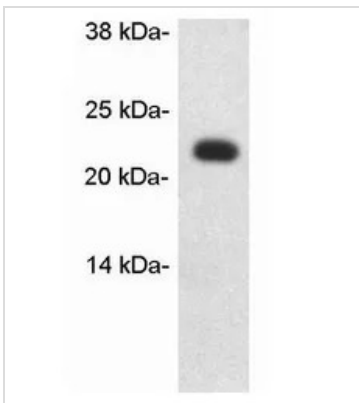
GTX22910 IP Image

IP analysis of mouse heart lysate using GTX22910 Caveolin 1 antibody.

Lane 1 : 10 % input

Lane 2 : Isotype control

Lane 3 : 5µg primary antibody



GTX22910 WB Image

WB analysis of rat heart protein extract using GTX22910 Caveolin 1 antibody.



For full product information, images and publications, please visit our [website](#).