

p53 (phospho Ser392) antibody

Cat. No. GTX23257

宿主	Rabbit
克隆	Polyclonal
同种型	IgG
实验应用	WB
种属反应	Rat

实验应用

应用说明

*最佳稀释倍数与浓度应由研究人员确认

Suggested dilution	Recommended dilution
WB	Assay dependent

以下为常规应用缩写的中文注解

WB: 免疫印迹

ICC/IF: 细胞染色

IHC-P: 石蜡切片

IHC-Fr: 冰冻切片

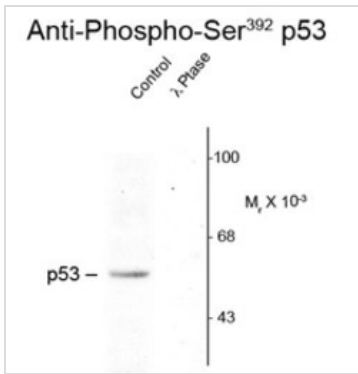
属性

形式	Liquid
存储溶液	10mM HEPES, 150mM NaCl, 0.01% BSA, 50% Glycerol
保存剂	No preservatives
存放说明	Store as concentrated solution. Centrifuge briefly prior to opening vial. For short-term storage (1-2 weeks), store at 4°C. For long-term storage, aliquot and store at -20°C or below. Avoid multiple freeze-thaw cycles.
浓度	Batch dependent (Please refer to the vial label for the specific concentration.)
偶联	Unconjugated
注意事项	仅供实验室使用。不适用于人类或动物的任何临床, 治疗或诊断用途。不适合动物或人类食用。



For full product information, images and publications, please visit our [website](#).

產品图片

**GTX23257 WB Image**

Western blot of rat brain nuclear fraction lysate showing specific immunolabeling of the ~53k using p53 (phospho Ser392) antibody (GTX23257) p53 phosphorylated at Ser392 (Control). The phosphospecificity of this labeling is shown in the second lane (lambda-phosphatase: λ-Ptase). The blot is identical to the control except that it was incubated in λ-Ptase (1200 units for 30 min) before being exposed to the phospho Ser392 p53 antibody. The immunolabeling is completely eliminated by treatment with λ-Ptase.



For full product information, images and publications, please visit our [website](#).