

ING1 antibody

Cat. No. GTX23711

宿主	Goat
克隆	Polyclonal
同种型	IgG
实验应用	WB, ELISA
种属反应	Human

实验应用

应用说明

*最佳稀释倍数与浓度应由研究人员确认

Suggested dilution	Recommended dilution
WB	1:500-1:3000
ELISA	1:4000-1:14000

以下为常规应用缩写的中文注解

WB: 免疫印迹

ICC/IF: 细胞染色

IHC-P: 石蜡切片

IHC-Fr: 冰冻切片

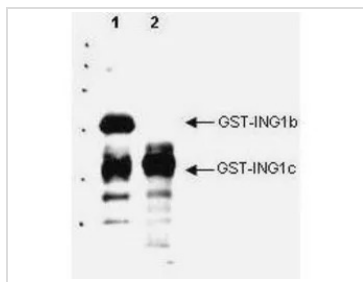
属性

形式	Liquid
存储溶液	20mM Potassium Phosphate, 150mM NaCl
保存剂	0.01% Sodium azide
存放说明	Store as concentrated solution. Centrifuge briefly prior to opening vial. For short-term storage (1-2 weeks), store at 4°C. For long-term storage, aliquot and store at -20°C or below. Avoid multiple freeze-thaw cycles.
浓度	1 mg/ml (Please refer to the vial label for the specific concentration.)
偶联	Unconjugated
注意事项	仅供实验室使用。不适用于人类或动物的任何临床、治疗或诊断用途。不适合动物或人类食用。



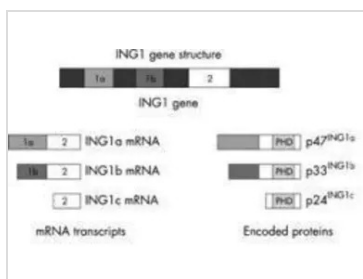
For full product information, images and publications, please visit our [website](#).

產品圖片



GTX23711 WB Image

Western blot analysis is shown using GeneTex's Affinity Purified anti-p33 ING1 antibody to detect over expressed Human ING1 present in cell nuclear extracts. This western blot shows reactivity with purified recombinant GST tagged human ING1b (lane 1) and ING1c protein (lane 2). No reactivity is seen against GST or other ING proteins (not shown). Reactivity of this polyclonal antibody is similar to the specificity of a positive control monoclonal antibody (not shown). The blot was incubated with a 1:1,000 dilution of the antibody at room temperature followed by detection using standard techniques.



GTX23711 Image



For full product information, images and publications, please visit our [website](#).