

DNA-PKcs (phospho Thr2609) antibody

Cat. No. GTX24194

宿主	Rabbit
克隆	Polyclonal
同种型	IgG
实验应用	WB, ICC/IF, IP, ELISA
种属反应	Human

引用文献 (5)

实验应用

应用说明

*最佳稀释倍数与浓度应由研究人员确认

Suggested dilution	Recommended dilution
WB	1:500-1:2000
ICC/IF	Assay dependent
IP	Assay dependent
ELISA	1:300000

以下为常规应用缩写的中文注解

WB: 免疫印迹

ICC/IF: 细胞染色

IHC-P: 石蜡切片

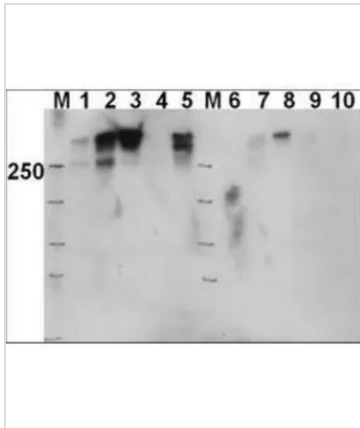
IHC-Fr: 冰冻切片

属性

形式	Liquid
存储溶液	20mM Potassium Phosphate, 150mM NaCl
保存剂	0.01% Sodium azide
存放说明	Store as concentrated solution. Centrifuge briefly prior to opening vial. For short-term storage (1-2 weeks), store at 4°C. For long-term storage, aliquot and store at -20°C or below. Avoid multiple freeze-thaw cycles.
浓度	1 mg/ml (Please refer to the vial label for the specific concentration.)
偶联	Unconjugated
RRID	AB_370110
注意事项	仅供实验室使用。不适用于人类或动物的任何临床, 治疗或诊断用途。不适合动物或人类食用。

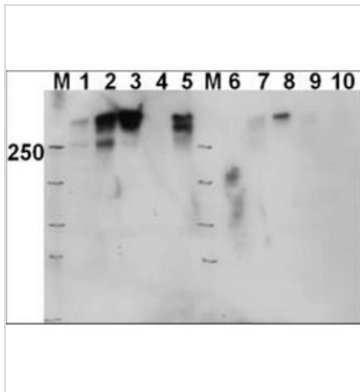
For full product information, images and publications, please visit our [website](#).

產品圖片



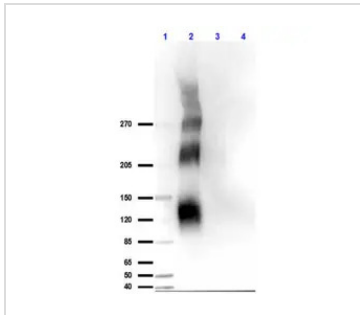
GTX24194 WB Image

Western blot using GeneTex Affinity Purified anti-DNAPKcs antibody (GTX24194) shows detection of a 460 kDa band corresponding to human DNAPKcs in various preparations. Lane 1: Fus1 untreated Lane 2: Fus1 IR (20Gy, 4h) Lane 3: Fus1 DNAPK inhibitor + IR Lane 4: MO59J (DNAPK-) untreated Lane 5: MO59J IR Lane 6: Fus1 untreated Lane 7: Fus1 IR (20Gy, 4h) Lane 8: Fus1 DNAPK inhibitor + IR Lane 9: MO59J untreated Lane 10: MO59J IR. Lanes 1-5 are nuclear extract whereas lanes 6-10 are whole cell lysates. MO59J is a cell line that lacks DNA-PKcs. FUS1 is the matched cell line complemented with a chromosomal fragment containing the DNA-PKcs gene. Approximately 20 µg of lysate was run on SDS-PAGE and transferred onto nitrocellulose, followed by reaction with a 1:1,000 dilution of anti-DNAPKcs antibody. Detection occurred using a 1:5,000 dilution of HRP-labeled Goat anti-Rabbit IgG for 1 hour at room temperature. A chemiluminescence system was used for signal detection (Roche) using a 1 min exposure time.



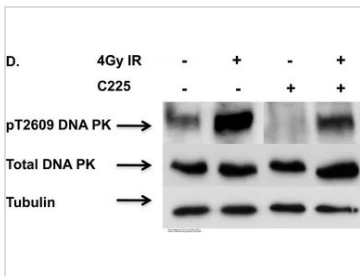
GTX24194 WB Image

WB analysis of various samples using GTX24194 DNA-PKcs (phospho Thr2609) antibody. Lane 1-5 are nuclear extracts. Lane 6-10 are whole cell lysates
 Lane 1 and 6 : Untreated Fus1 whole cell lysates
 Lane 2 and 7 : IR-treated Fus1 whole cell lysates
 Lane 3 and 8 : IR and DNAPK inhibitor-treated Fus1 whole cell lysates
 Lane 4 and 9 : Untreated M059J whole cell lysates
 Lane 5 and 10 : IR-treated M059J whole cell lysates
 Loading : 20 µg
 Dilution : 1:1000



GTX24194 WB Image

WB analysis of various samples using GTX24194 DNA-PKcs (phospho Thr2609) antibody.
 Lane 1 : Protein ladder
 Lane 2 : DNA Pk phosphor
 Lane 3 : DNA Pk
 Lane 4 : BSA
 Loading : 10 µg
 Dilution : 1 µg/mL



GTX24194 WB Image

The data was published in the journal PLoS One in 2011. [PMID: 21912620](https://pubmed.ncbi.nlm.nih.gov/21912620/)



For full product information, images and publications, please visit our [website](http://www.genetex.com).