

PYK2 (phospho Tyr579/Tyr580) antibody

Cat. No. GTX24807

宿主	Rabbit
克隆	Polyclonal
同种型	IgG
实验应用	WB, ICC/IF, IHC-P, FCM, IP
种属反应	Human, Mouse, Rat

实验应用

应用说明

*最佳稀释倍数与浓度应由研究人员确认

Suggested dilution	Recommended dilution
WB	Assay dependent
ICC/IF	1:250
IHC-P	1:10-1:100
FCM	1:250
IP	Assay dependent

以下为常规应用缩写的中文注解

WB: 免疫印迹

ICC/IF: 细胞染色

IHC-P: 石蜡切片

IHC-Fr: 冰冻切片

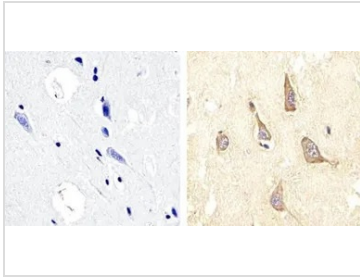
属性

形式	Liquid
存储溶液	PBS, 0.1% BSA, 50% Glycerol
保存剂	0.05% Sodium azide
存放说明	Store as concentrated solution. Centrifuge briefly prior to opening vial. For short-term storage (1-2 weeks), store at 4°C. For long-term storage, aliquot and store at -20°C or below. Avoid multiple freeze-thaw cycles.
浓度	Batch dependent (Please refer to the vial label for the specific concentration.)
偶联	Unconjugated
注意事项	仅供实验室使用。不适用于人类或动物的任何临床、治疗或诊断用途。不适合动物或人类食用。



For full product information, images and publications, please visit our [website](#).

產品圖片

**GTX24807 IHC-P Image**

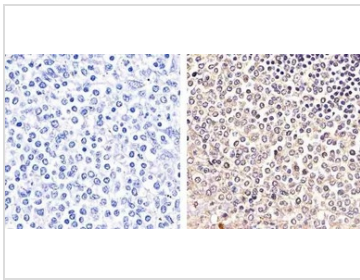
IHC-P analysis of human brain tissue using GTX24807 PYK2 (phospho Tyr579/Tyr580) antibody.

Right : Primary antibody

Left : Negative control without primary antibody

Antigen retrieval : 10mM sodium citrate (pH 6.0), microwaved for 8-15 min

Dilution : 1:20

**GTX24807 IHC-P Image**

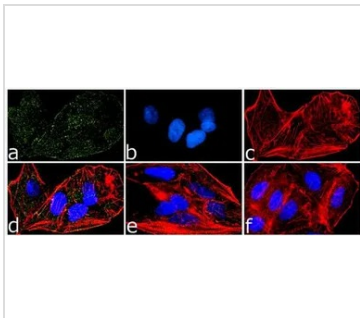
IHC-P analysis of human spleen tissue using GTX24807 PYK2 (phospho Tyr579/Tyr580) antibody.

Right : Primary antibody

Left : Negative control without primary antibody

Antigen retrieval : 10mM sodium citrate (pH 6.0), microwaved for 8-15 min

Dilution : 1:20

**GTX24807 ICC/IF Image**

ICC/IF analysis of A549 cells treated with 50ng of PDGF for 10 minutes using GTX24807 PYK2 (phospho Tyr579/Tyr580) antibody. Panel e is untreated cell with no signal. Panel f is a no primary antibody control.

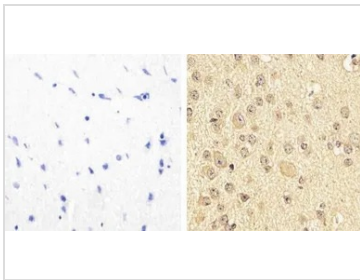
Green : Primary antibody

Blue : Nuclei

Red : Actin

Fixation : 4% paraformaldehyde

Permeabilization : 0.1% Triton X-100 for 10 minutes

**GTX24807 IHC-P Image**

IHC-P analysis of mouse brain tissue using GTX24807 PYK2 (phospho Tyr579/Tyr580) antibody.

Right : Primary antibody

Left : Negative control without primary antibody

Antigen retrieval : 10mM sodium citrate (pH 6.0), microwaved for 8-15 min

Dilution : 1:20



For full product information, images and publications, please visit our [website](#).