

## GATA4 (phospho Ser105) antibody

Cat. No. GTX25245

宿主	Rabbit
克隆	Polyclonal
同种型	IgG
实验应用	WB, IHC-P
种属反应	Human, Mouse

## 实验应用

## 应用说明

\*最佳稀释倍数与浓度应由研究人员确认

Suggested dilution	Recommended dilution
WB	1:500
IHC-P	1:10-1:50

以下为常规应用缩写的中文注解

WB: 免疫印迹

ICC/IF: 细胞染色

IHC-P: 石蜡切片

IHC-Fr: 冰冻切片

## 属性

形式	Liquid
存储溶液	PBS, 0.1% BSA
保存剂	0.05% Sodium azide
存放说明	Store as concentrated solution. Centrifuge briefly prior to opening vial. For short-term storage (1-2 weeks), store at 4°C. For long-term storage, aliquot and store at -20°C or below. Avoid multiple freeze-thaw cycles.
浓度	Batch dependent (Please refer to the vial label for the specific concentration.)
偶联	Unconjugated
注意事项	仅供实验室使用。不适用于人类或动物的任何临床，治疗或诊断用途。不适合动物或人类食用。



For full product information, images and publications, please visit our [website](#).

## 產品圖片

**GTX25245 IHC-P Image**

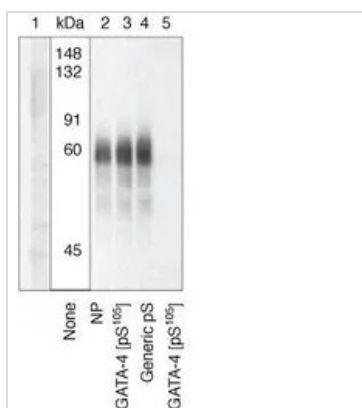
IHC-P analysis of mouse lymph node using GTX25245 GATA4 (phospho Ser105) antibody.

Right : Primary antibody

Left : Negative control without primary antibody

Antigen retrieval : 10mM sodium citrate (pH 6.0), microwaved for 8-15 min

Dilution : 1:20

**GTX25245 WB Image**

WB analysis of cardiomyocytes overexpressing GATA-4 mutant(S105A) (Lane 1), wild type GATA-4 (Lane 2) stimulated with PE, (Lane 3) phosphopeptide using GTX25245 GATA4 (phospho Ser105) antibody prior incubated with non-phosphopeptide corresponding to the phosphopeptide immunogen (Lane 3) a generic phosphothreonine-containing peptide (Lane 4), or the phosphopeptide immunogen (Lane 5). Mutant analysis and peptide competition demonstrate antibody phospho-site specificity



For full product information, images and publications, please visit our [website](#).