

JAK1 (phospho Tyr1022/1023) antibody

Cat. No. GTX25493

宿主	Rabbit
克隆	Polyclonal
同种型	IgG
实验应用	WB, ICC/IF
种属反应	Human, Mouse, Rat, Rabbit, Primate

引用文献 (2)

实验应用

应用说明

*最佳稀释倍数与浓度应由研究人员确认

Suggested dilution	Recommended dilution
WB	Assay dependent
ICC/IF	1:250

以下为常规应用缩写的中文注解

WB: 免疫印迹

ICC/IF: 细胞染色

IHC-P: 石蜡切片

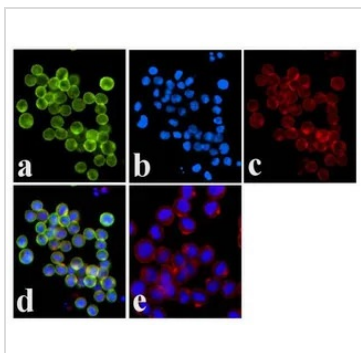
IHC-Fr: 冰冻切片

属性

形式	Liquid
存储溶液	PBS, 0.1% BSA, 50% Glycerol
保存剂	0.05% Sodium azide
存放说明	Store as concentrated solution. Centrifuge briefly prior to opening vial. For short-term storage (1-2 weeks), store at 4°C. For long-term storage, aliquot and store at -20°C or below. Avoid multiple freeze-thaw cycles.
浓度	Batch dependent (Please refer to the vial label for the specific concentration.)
偶联	Unconjugated
RRID	AB_625940
注意事项	仅供实验室使用。不适用于人类或动物的任何临床, 治疗或诊断用途。不适合动物或人类食用。

For full product information, images and publications, please visit our [website](#).

產品圖片



GTX25493 ICC/IF Image

ICC/IF analysis of COLO 205 cells using GTX25493 JAK1 (phospho Tyr1022/1023) antibody. Panel e is a no primary antibody control.

Green : Primary antibody

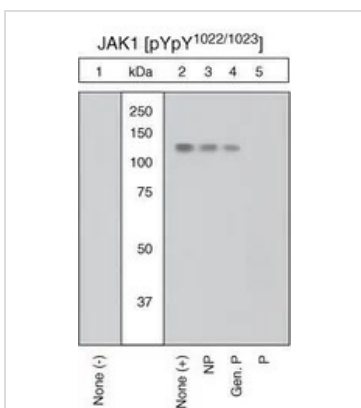
Blue : Nuclei

Red : Actin

Fixation : 4% paraformaldehyde

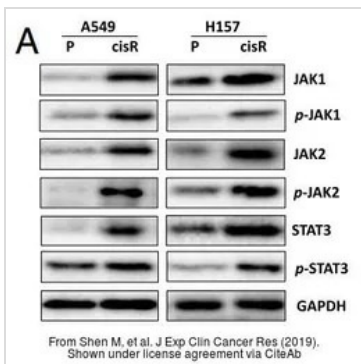
Permeabilization : 0.25% Triton X-100 for 10 minutes

Dilution : 1:250 dilution in 1% BSA incubated for 3 hours at room temperature



GTX25493 WB Image

WB analysis of samples using GTX25493 JAK1 (phospho Tyr1022/1023) antibody. The data show that only the immunogen phosphopeptide blocks the signal, demonstrating the specificity of the antibody.



GTX25493 WB Image

The data was published in the 2019 in J Exp Clin Cancer Res. [PMID: 30961670](https://pubmed.ncbi.nlm.nih.gov/30961670/)



For full product information, images and publications, please visit our [website](https://www.genetex.com).