

58K Golgi protein antibody

Cat. No. GTX25820

宿主	Rabbit
克隆	Polyclonal
同种型	IgG
实验应用	WB, FCM
种属反应	Human, Mouse

实验应用

应用说明

*最佳稀释倍数与浓度应由研究人员确认

Suggested dilution	Recommended dilution
WB	1:500-1:1000
FCM	Assay dependent

以下为常规应用缩写的中文注解

WB: 免疫印迹

ICC/IF: 细胞染色

IHC-P: 石蜡切片

IHC-Fr: 冰冻切片

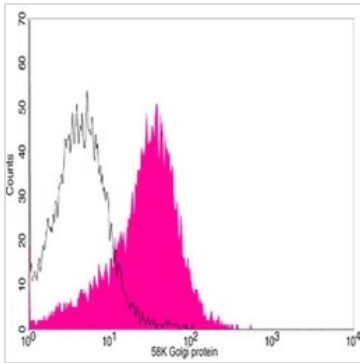
属性

形式	Liquid
存储溶液	PBS, 1% BSA
保存剂	0.02% Sodium azide
存放说明	Store as concentrated solution. Centrifuge briefly prior to opening vial. For short-term storage (1-2 weeks), store at 4°C. For long-term storage, aliquot and store at -20°C or below. Avoid multiple freeze-thaw cycles.
浓度	0.482 mg/ml (Please refer to the vial label for the specific concentration.)
偶联	Unconjugated
注意事项	仅供实验室使用。不适用于人类或动物的任何临床，治疗或诊断用途。不适合动物或人类食用。

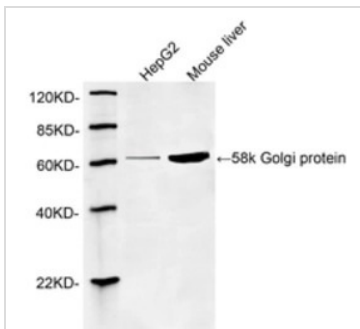


For full product information, images and publications, please visit our [website](#).

產品圖片

**GTX25820 FCM Image**

Flow cytometric analysis of HepG2 cells using 58K Golgi protein Antibody, pAb, Rabbit (GTX25820; shaded histogram) or with an isotype control antibody (open histogram), followed by R-PE conjugated anti-rabbit IgG.

**GTX25820 WB Image**

Western blot analysis of cell and tissue lysates using 1 μ g/ml Rabbit Anti-58K Golgi protein Polyclonal Antibody (GTX25820). The signal was developed with IRDyeTM 800 Conjugated Goat Anti-Rabbit IgG.

Predicted Size: 58 KD

Observed Size: 58 KD



For full product information, images and publications, please visit our [website](#).