

PHAP antibody

Cat. No. GTX25987

宿主	Rabbit
克隆	Polyclonal
同种型	IgG
实验应用	WB, IHC-P, ELISA, IHC
种属反应	Human, Mouse, Rat

实验应用

应用说明

*最佳稀释倍数与浓度应由研究人员确认

Suggested dilution	Recommended dilution
WB	1 µg/ml
IHC-P	Assay dependent
ELISA	Assay dependent
IHC	10µg/ml

以下为常规应用缩写的中文注解

WB: 免疫印迹

ICC/IF: 细胞染色

IHC-P: 石蜡切片

IHC-Fr: 冰冻切片

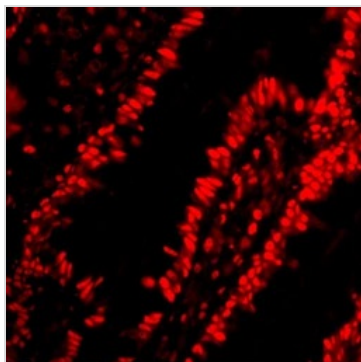
属性

形式	Liquid
存储溶液	PBS
保存剂	0.02% Sodium azide
存放说明	Store as concentrated solution. Centrifuge briefly prior to opening vial. For short-term storage (1-2 weeks), store at 4°C. For long-term storage, aliquot and store at -20°C or below. Avoid multiple freeze-thaw cycles.
浓度	Batch dependent (Please refer to the vial label for the specific concentration.)
偶联	Unconjugated
注意事项	仅供实验室使用。不适用于人类或动物的任何临床、治疗或诊断用途。不适合动物或人类食用。



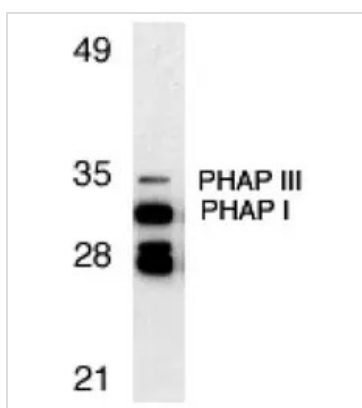
For full product information, images and publications, please visit our [website](#).

產品圖片

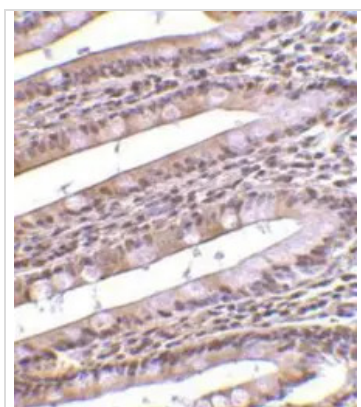
**GTX25987 IHC-P Image**

IHC-P analysis of human small intestine tissue using GTX25987 PHAP antibody.

Dilution : 20 µg/ml

**GTX25987 WB Image**

Western blot analysis of PHAP expression in Raji cell lysate with PHAP antibody (GTX25987) at 1µg/ml. The two bands below PHAP I might be differently spliced isoforms of PHAP.

**GTX25987 IHC Image**

Immunohistochemical staining of PHAP in human small intestine with PHAP antibody (GTX25987) at 10µg/ml.



For full product information, images and publications, please visit our [website](#).