

58K Golgi protein antibody [58K-9]

Cat. No. GTX26284

宿主	Mouse
克隆	Monoclonal
同种型	IgG1
实验应用	WB, ICC/IF, IHC-P, IP, Dot, EM
种属反应	Human, Mouse, Rat, Bovine, Dog, Hamster, Pig, Monkey, Kangaroo rat

引用文献 (5)

实验应用

应用说明

*最佳稀释倍数与浓度应由研究人员确认

Suggested dilution	Recommended dilution
WB	1:5,000
ICC/IF	1:50
IHC-P	Assay dependent
IP	Assay dependent
Dot	Assay dependent
EM	Assay dependent

以下为常规应用缩写的中文注解

WB: 免疫印迹

ICC/IF: 细胞染色

IHC-P: 石蜡切片

IHC-Fr: 冰冻切片

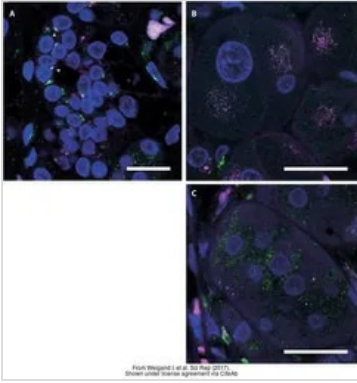
属性

形式	Liquid
存储溶液	Ascites
保存剂	15mM Sodium azide
存放说明	Store as concentrated solution. Centrifuge briefly prior to opening vial. For short-term storage (1-2 weeks), store at 4°C. For long-term storage, aliquot and store at -20°C or below. Avoid multiple freeze-thaw cycles.
偶联	Unconjugated
RRID	AB_370603
注意事项	仅供实验室使用。不适用于人类或动物的任何临床、治疗或诊断用途。不适合动物或人类食用。



For full product information, images and publications, please visit our [website](#).

產品圖片

**GTX26284 IHC-P Image**

The data was published in the journal Sci Rep in 2017. [PMID: 28250426](https://pubmed.ncbi.nlm.nih.gov/28250426/)



For full product information, images and publications, please visit our [website](#).