

ARHGAP25 antibody

Cat. No. GTX30063

| | |
|------|----------------------|
| 宿主 | Rabbit |
| 克隆 | Polyclonal |
| 同种型 | IgG |
| 实验应用 | WB, ICC/IF, IHC-P |
| 种属反应 | Human, Mouse, Monkey |

实验应用

应用说明

*最佳稀释倍数与浓度应由研究人员确认

| Suggested dilution | Recommended dilution |
|--------------------|----------------------|
| WB | 1:500 - 1:2000 |
| ICC/IF | 1:50 - 1:100 |
| IHC-P | 1:50 - 1:100 |

以下为常规应用缩写的中文注解

WB: 免疫印迹

ICC/IF: 细胞染色

IHC-P: 石蜡切片

IHC-Fr: 冰冻切片

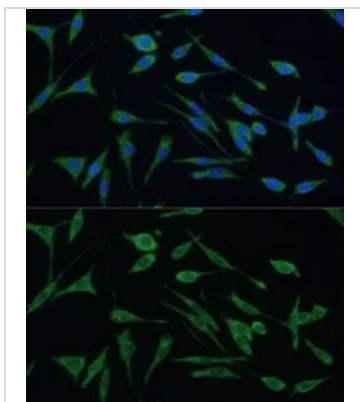
属性

| | |
|------|--|
| 形式 | Liquid |
| 存储溶液 | PBS, 50% Glycerol |
| 保存剂 | 0.02% Sodium azide |
| 存放说明 | Store as concentrated solution. Centrifuge briefly prior to opening vial. For short-term storage (1-2 weeks), store at 4°C. For long-term storage, aliquot and store at -20°C or below. Avoid multiple freeze-thaw cycles. |
| 浓度 | Batch dependent (Please refer to the vial label for the specific concentration.) |
| 偶联 | Unconjugated |
| 注意事项 | 仅供实验室使用。不适用于人类或动物的任何临床, 治疗或诊断用途。不适合动物或人类食用。 |



For full product information, images and publications, please visit our [website](#).

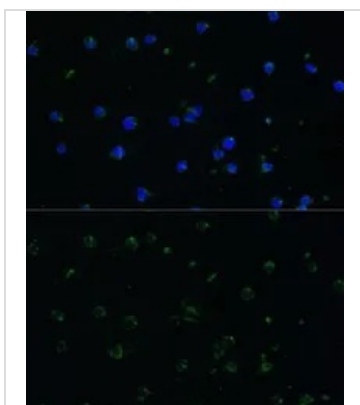
產品圖片

**GTX30063 ICC/IF Image**

ICC/IF analysis of L929 cells using GTX30063 ARHGAP25 antibody.

Blue : DAPI

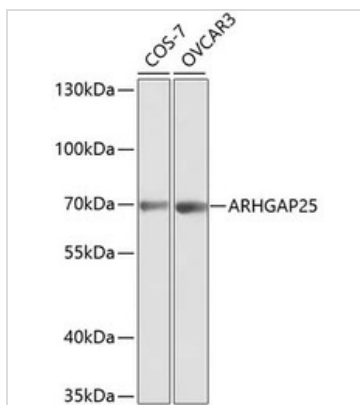
Dilution : 1:100

**GTX30063 ICC/IF Image**

ICC/IF analysis of Jurkat cells using GTX30063 ARHGAP25 antibody.

Blue : DAPI

Dilution : 1:100

**GTX30063 WB Image**

WB analysis of various sample lysates using GTX30063 ARHGAP25 antibody.

Dilution : 1:1000

Loading : 25µg per lane



For full product information, images and publications, please visit our [website](#).