

## TPH2 (phospho Ser19) antibody

**Cat. No. GTX31131**

|      |            |
|------|------------|
| 宿主   | Rabbit     |
| 克隆   | Polyclonal |
| 同种型  | IgG        |
| 实验应用 | WB         |
| 种属反应 | Rat        |

## 实验应用

## 应用说明

\*最佳稀释倍数与浓度应由研究人员确认

| Suggested dilution | Recommended dilution |
|--------------------|----------------------|
| WB                 | Assay dependent      |

以下为常规应用缩写的中文注解

WB: 免疫印迹

ICC/IF: 细胞染色

IHC-P: 石蜡切片

IHC-Fr: 冰冻切片

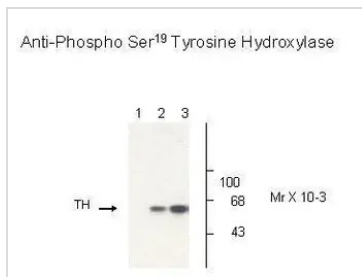
## 属性

|      |  |
|------|--|
| 形式   | Liquid   |
| 存储溶液 | 10mM HEPES, 150mM NaCl, 0.01% BSA, 50% Glycerol  |
| 保存剂  | No preservatives   |
| 存放说明 | Store as concentrated solution. Centrifuge briefly prior to opening vial. For short-term storage (1-2 weeks), store at 4°C. For long-term storage, aliquot and store at -20°C or below. Avoid multiple freeze-thaw cycles. |
| 浓度   | Batch dependent (Please refer to the vial label for the specific concentration.)   |
| 偶联   | Unconjugated   |
| 注意事项 | 仅供实验室使用。不适用于人类或动物的任何临床, 治疗或诊断用途。不适合动物或人类食用。  |

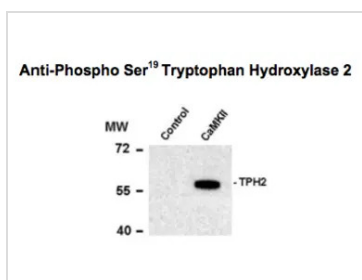


For full product information, images and publications, please visit our [website](#).

## 產品圖片

**GTX31131 WB Image**

Western Blot: Tyrosine Hydroxylase (phospho Ser19) Antibody [GTX31131] - Non-phospho-recombinant tyrosine hydroxylase (Lane 1), PC-12 cell lysate (Lane 2), and PC-12 cell lysate stimulated with KCl, 30 mM for 10 min (Lane 3) showing specific immunolabeling of the ~60k tyrosine hydroxylase phosphorylated at Ser19.

**GTX31131 WB Image**

Western blot of recombinant tryptophan hydroxylase incubated in the absence (Control) and presence of Ca<sup>2+</sup>/calmodulin dependent kinase II (CaMKII) showing specific immunolabeling of the ~55k tryptophan hydroxylase protein phosphorylated at Ser19 using TPH2 (phospho Ser19) antibody (GTX31131)



For full product information, images and publications, please visit our [website](#).