

SLC27A6 antibody

Cat. No. GTX31878

宿主	Rabbit
克隆	Polyclonal
同种型	IgG
实验应用	WB, IHC-P, ELISA
种属反应	Human, Mouse, Rat, Sheep

引用文献 (1)

实验应用

应用说明

*最佳稀释倍数与浓度应由研究人员确认

Suggested dilution	Recommended dilution
WB	1 - 2 µg/mL
IHC-P	5 µg/mL
ELISA	Assay dependent

以下为常规应用缩写的中文注解

WB: 免疫印迹

ICC/IF: 细胞染色

IHC-P: 石蜡切片

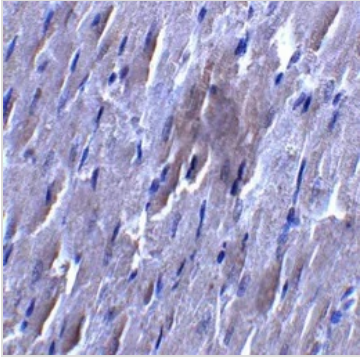
IHC-Fr: 冰冻切片

属性

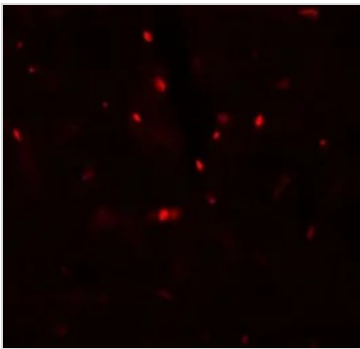
形式	Liquid
存储溶液	PBS
保存剂	0.02% Sodium azide
存放说明	Store as concentrated solution. Centrifuge briefly prior to opening vial. For short-term storage (1-2 weeks), store at 4°C. For long-term storage, aliquot and store at -20°C or below. Avoid multiple freeze-thaw cycles.
浓度	1 mg/ml (Please refer to the vial label for the specific concentration.)
偶联	Unconjugated
注意事项	仅供实验室使用。不适用于人类或动物的任何临床, 治疗或诊断用途。不适合动物或人类食用。

For full product information, images and publications, please visit our [website](#).

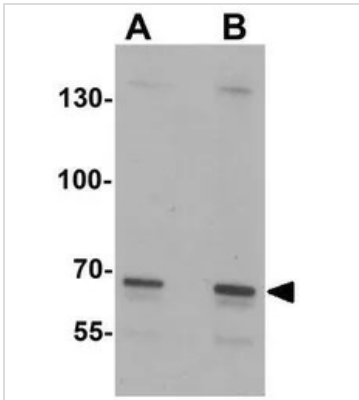
產品圖片

**GTX31878 IHC-P Image**

IHC-P analysis of rat heart tissue using GTX31878 SLC27A6 antibody.
Working concentration : 5 $\mu\text{g/ml}$

**GTX31878 IHC-P Image**

IHC-P analysis of rat heart tissue using GTX31878 SLC27A6 antibody.
Working concentration : 20 $\mu\text{g/ml}$

**GTX31878 WB Image**

WB analysis of A-20 cell lysate using GTX31878 SLC27A6 antibody.
Working concentration : (A) 1 and (B) 2 $\mu\text{g/ml}$



For full product information, images and publications, please visit our [website](#).