

TRIP12 antibody

Cat. No. GTX32138

宿主	Rabbit
克隆	Polyclonal
同种型	IgG
实验应用	WB, ICC/IF, IHC-P, ELISA
种属反应	Human, Mouse, Rat

实验应用

应用说明

*最佳稀释倍数与浓度应由研究人员确认

Suggested dilution	Recommended dilution
WB	1 - 2 µg/mL
ICC/IF	Assay dependent
IHC-P	5 µg/mL
ELISA	Assay dependent

以下为常规应用缩写的中文注解

WB: 免疫印迹

ICC/IF: 细胞染色

IHC-P: 石蜡切片

IHC-Fr: 冰冻切片

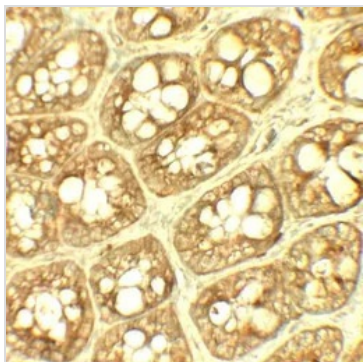
属性

形式	Liquid
存储溶液	PBS
保存剂	0.02% Sodium azide
存放说明	Store as concentrated solution. Centrifuge briefly prior to opening vial. Store at 4°C.
浓度	1 mg/ml (Please refer to the vial label for the specific concentration.)
偶联	Unconjugated
注意事项	仅供实验室使用。不适用于人类或动物的任何临床、治疗或诊断用途。不适合动物或人类食用。

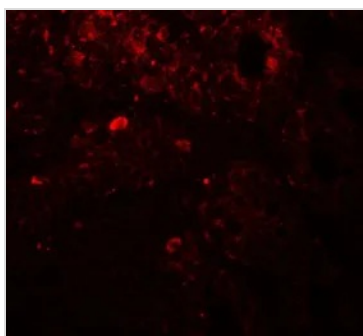


For full product information, images and publications, please visit our [website](#).

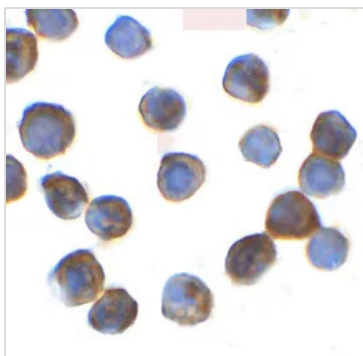
產品圖片

**GTX32138 IHC-P Image**

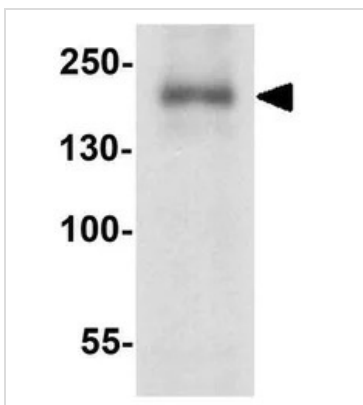
IHC-P analysis of rat colon tissue using GTX32138 TRIP12 antibody.
Working concentration : 5 µg/ml

**GTX32138 IHC-P Image**

IHC-P analysis of rat colon tissue using GTX32138 TRIP12 antibody.
Working concentration : 20 µg/ml

**GTX32138 ICC/IF Image**

ICC/IF analysis of HeLa cells using GTX32138 TRIP12 antibody.
Dilution : 2 µg/ml

**GTX32138 WB Image**

WB analysis of rat colon tissue lysate using GTX32138 TRIP12 antibody.
Working concentration : 1 µg/ml



For full product information, images and publications, please visit our [website](#).