

Beclin 1 antibody [5A11]

Cat. No. GTX34056

宿主	Mouse
克隆	Monoclonal
同种型	IgG1
实验应用	IHC-P
种属反应	Human

实验应用

应用说明

*最佳稀释倍数与浓度应由研究人员确认

Suggested dilution	Recommended dilution
IHC-P	1:100-1:200

以下为常规应用缩写的中文注解

WB: 免疫印迹

ICC/IF: 细胞染色

IHC-P: 石蜡切片

IHC-Fr: 冰冻切片

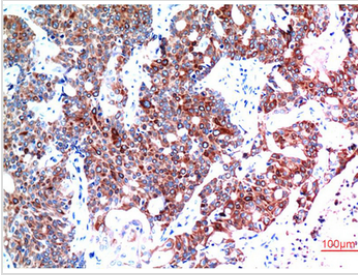
属性

形式	Liquid
存储溶液	PBS, 0.5% BSA, 50% Glycerol
保存剂	0.02% Sodium azide
存放说明	Store as concentrated solution. Centrifuge briefly prior to opening vial. For short-term storage (1-2 weeks), store at 4°C. For long-term storage, aliquot and store at -20°C or below. Avoid multiple freeze-thaw cycles.
浓度	1 mg/ml (Please refer to the vial label for the specific concentration.)
偶联	Unconjugated
注意事项	仅供实验室使用。不适用于人类或动物的任何临床, 治疗或诊断用途。不适合动物或人类食用。

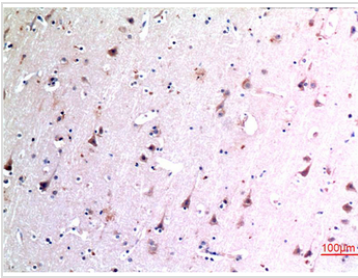


For full product information, images and publications, please visit our [website](#).

產品图片

**GTX34056 IHC-P Image**

IHC-P analysis of human breast carcinoma tissue using GTX34056 Beclin 1 antibody [5A11].
Dilution : 1:200

**GTX34056 IHC-P Image**

IHC-P analysis of human brain tissue using GTX34056 Beclin 1 antibody [5A11].
Dilution : 1:200



For full product information, images and publications, please visit our [website](#).